

NEED HELP?

DO NOT RETURN TO STORE. PLEASE VISIT US AT:
www.polygroupstore.com OR +1 (888) 919-0070

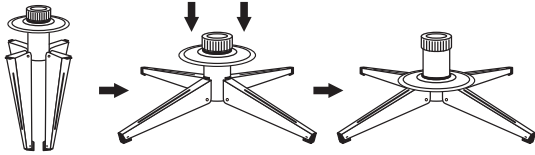
TREE ASSEMBLY INSTRUCTIONS

Congratulations on purchasing your new tree from **Polygroup®!**

This tree comes with Quick Set® technology - allowing you to set up your tree and light it up in minutes!
Carefully follow the instructions below on how to quickly and easily set up your new tree.

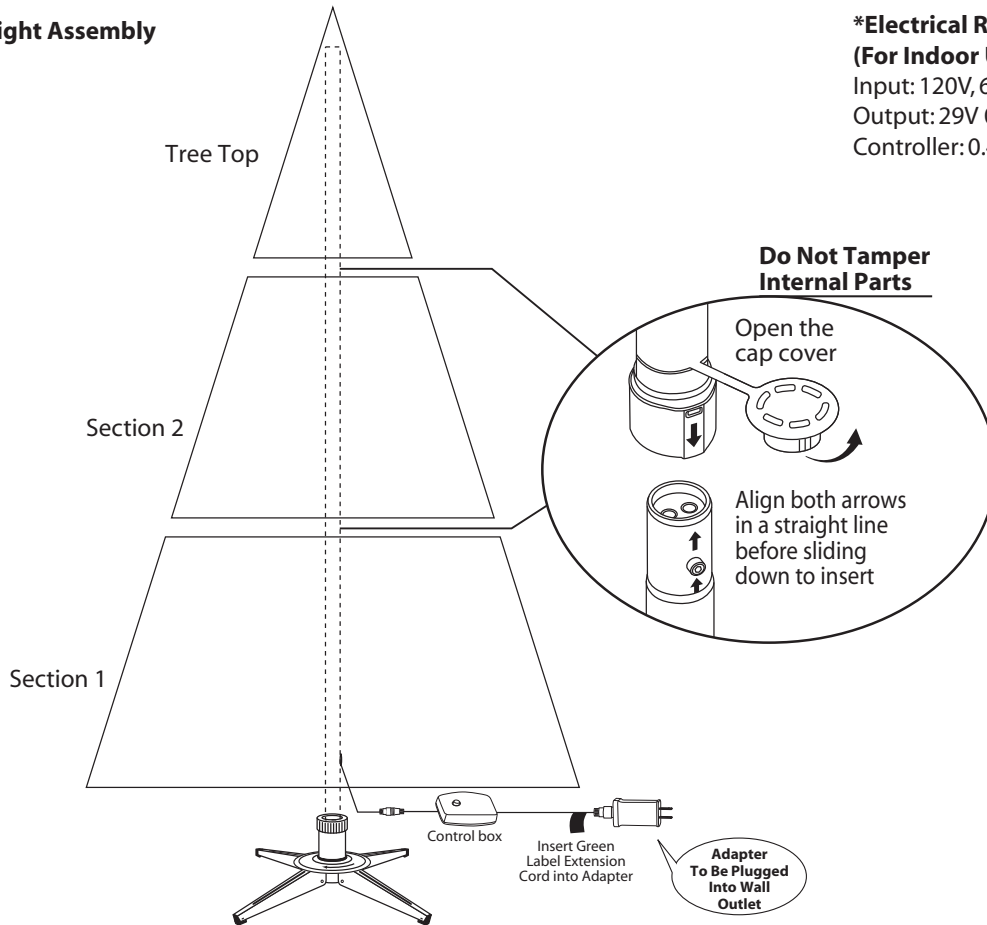
1. Before you start to assemble your tree, choose an appropriate location near a wall outlet.
2. Assemble the tree stand and place on a level surface. (See Fig. A)

Fig. A - Tree Stand Assembly



Unfold the legs and lay the stand in a flat area. Then slide the locking disc downward and snap into place.

Fig. B - Tree and Light Assembly



3. Each tree section is numbered with a sticker. Please identify all sections before assembling.
4. Assemble the tree from bottom to the top. Start with the bottom section and remove the protective cap before inserting into the assembled stand. Make sure the pole is firmly inserted and secured into the stand.
5. Continue by inserting the upper tree section(s) to the lower section(s) until inserting the tree top.
6. Allow branches to fall into place or gently pull up and out. When adjusting branches, be sure that all wires are free of branch hinges.
7. Just plug the adapter (connecting with the tree power cord) into the wall outlet (See Fig. B), your entire tree should now be lit. If some bulbs do not light or flickers, search for any loose plugs and/or broken, loose or missing bulbs. Replace bulbs promptly in order to maintain the performance and life expectancy of your pre-lit tree.
8. Begin to shape the branches and tips working from the bottom to the top. Start with tips farthest from the pole and fan out one to the right, one to the left and one at the center of the main stem. (See Fig. C)

Fig. C



9. After shaping the entire tree following the previous step, slightly upsweep all branch tips for a uniform look. Shift branches to fill any gaps. Your Christmas tree is now complete and ready to be decorated.

STORAGE INSTRUCTIONS

1. Unplug adapter from the wall outlet first and then remove all ornaments and decorations.
2. Disassemble the tree from the top to the bottom. Start with the tree top and gently lift straight up to remove from section below and fold all branches toward the pole.

MODEL #:TG76M3J72D10

- Continue by gently lifting straight up each section(s) from the section below and fold all branches toward the pole until the bottom section is removed from the tree stand. Cover the cap on the poles to avoid damaging the internal parts. **(See Fig. D)**
- Carefully place all tree sections into shipping box and tape it shut.
- When not in use, please store your tree in a cool, dry place away from sunlight. Exposing your tree to excessive heat or humidity may damage your tree.

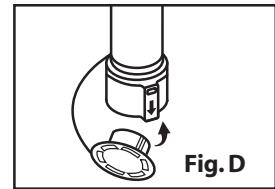


Fig. D

TROUBLESHOOTING TIPS

For Pre-lit Trees, If The Tree Does Not Illuminate

- Please check to make sure that all plugs are properly connected according to the color labels indicated in **Fig.B** and the adapter is firmly plug to the wall outlet.
- Turning the poles gently to make sure pole to pole are connected into place.
- Check for loose connection between light string plugs and extension cords.
- Please check for loose, broken or missing light bulbs and replace as needed.

Loose Hinge Pin

- Extra hinge pins are included for repairing the hinges. Place the branch into the slot of the bracket.
- Insert a new hinge pin through the hole and secure using the retainer washer. **(See Fig. E)**

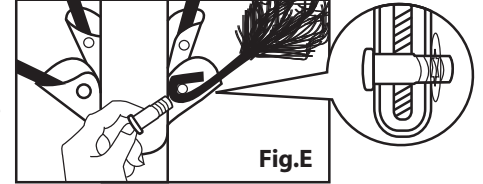
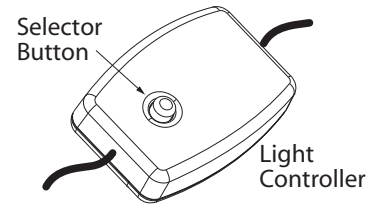


Fig. E

HOW TO USE THE DUAL COLOR LIGHT CONTROLLER :

Press the selector button on the "Dual Color Light Controller" to select among:

- (1) CLEAR-MULTI: FADING (2) CLEAR: FADING**
(3) CLEAR-MULTI: ALTERNATING (4) CLEAR: STEADY
(5) CLEAR-MULTI: SLOW FADING (6) MULTI: STEADY
(7) MULTI: FADING (8) COMBINATION



Selector Button

Light Controller

CAUTION:

To reduce the risk of fire and electric shock:

- Use only the power supply that was provided with this product. Using a different adapter will damage the lights and may cause fire, or electrical shock hazards.
- Do not install on trees having needles, leaves or branch covering of metal or materials which look like metal.
- Do not mount or support strings in a manner that can cut or damage wire insulation.

SPARE PARTS

Each tree includes hinge pins/washers, and for pre-lit trees spare bulbs are also included. If extra parts are needed, please contact our customer service center.

LIMITED WARRANTY

Polygroup® Trading Limited (hereinafter "Polygroup®") provides a Limited Warranty against defects in material and workmanship. This Limited Warranty only applies to the original purchaser, and only applies with proof of purchase. Should the purchaser or others modify or repair the product themselves or by unauthorized persons; use for commercial purposes; use the product in contravention of the instructions with regards to set-up and use; use improper voltage or accessories; abuse the product in any way; misuse through accident or negligence, this Warranty will not apply. This Limited Warranty does not cover consequential damages, including normal wear-and-tear, nor acts of God or events outside the control of Polygroup®.

Polygroup® is pleased to repair or replace products for five (5) years for Un-lit trees and two (2) years for Pre-lit trees against manufacturer defects on parts from the date of purchase. Please keep your original store sales receipt, as this proof of purchase will be required and must accompany warranty claims to Polygroup® or its designated agents.

IN NO EVENT SHALL Polygroup®, ITS AUTHORIZED AGENTS, RELATED ENTITIES, OR EMPLOYEES BE LIABLE TO THE BUYER OR ANY OTHER PARTY FOR DIRECT OR CONSEQUENTIAL DAMAGES, including, but not limited to, injury, loss of income, and property damage. Some jurisdictions do not allow the exclusion or limitation of certain damages, so the above limitation or exclusion may not apply to you. This Limited Warranty is not extended to close-outs, factory seconds, donated items, or resold products (i.e. garage sales, online auctions, or online retailers not purchasing the products directly from a Polygroup® company). Any issues with items purchased from these types of vendors / sellers will need to be addressed directly with them.

CUSTOMER SERVICE FOR CHRISTMAS TREES

For any questions, assistance, or missing parts, **Do Not Return To Place Of Purchase.** Please contact us at **+1 (888) 919-0070** or visit our website at **www.polygroupstore.com**. One of our customer service representatives will be happy to assist you.

Tree ID#: _____
 Tree UPC#: _____
 Store Purchased: _____
 Specify Problem: _____

Customer Name: _____
 Address:(No P.O. Boxes) _____
 City & State: _____
 Zip Code: _____
 Day Phone: _____
 Date Purchased: _____

TREE ID# IS LOCATED ON END PANEL OF BOX. TREE ID# IS REQUIRED WHEN REQUESTING REPLACEMENT PARTS.