

## NEED HELP?

DO NOT RETURN TO STORE. PLEASE VISIT US AT:  
[www.polygroupstore.com](http://www.polygroupstore.com) OR +1 (888) 919-0070

## WREATH ASSEMBLY INSTRUCTIONS

Congratulations on purchasing your new wreath from **Polygroup®!**

Carefully follow the instructions below on how to quickly and easily set up your new wreath.

1. Choose an appropriate location near a wall outlet.

1. Fasten the eye bolts of Part 1 to Part 2. (See Figure 1)

2. Fasten the eye bolts of Part 3 to Part 2. (See Figure 2)

3. Fasten the eye bolts of Part 4 to Part 3. Fasten the eye bolts of Part 4 to the end-connector of sector 1. (See Figure 3)

4. Shape the wreath by pulling the tips out and upwards to get a fuller look.

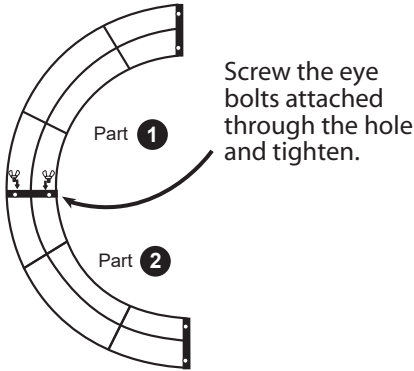


Figure 1

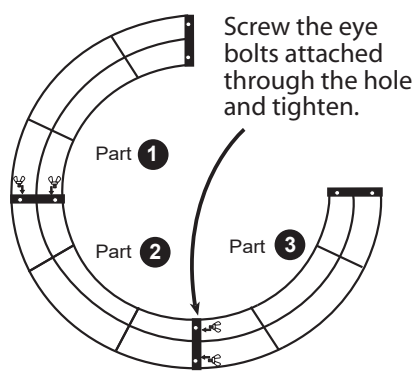


Figure 2

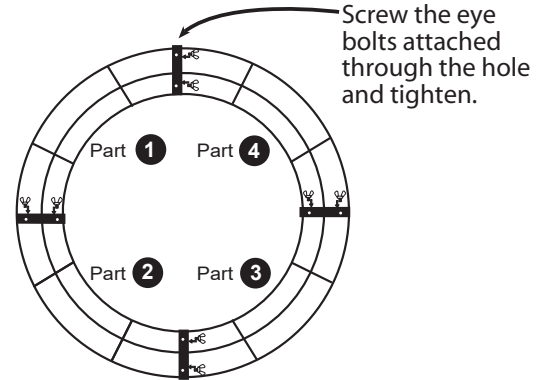


Figure 3



Garland X 2

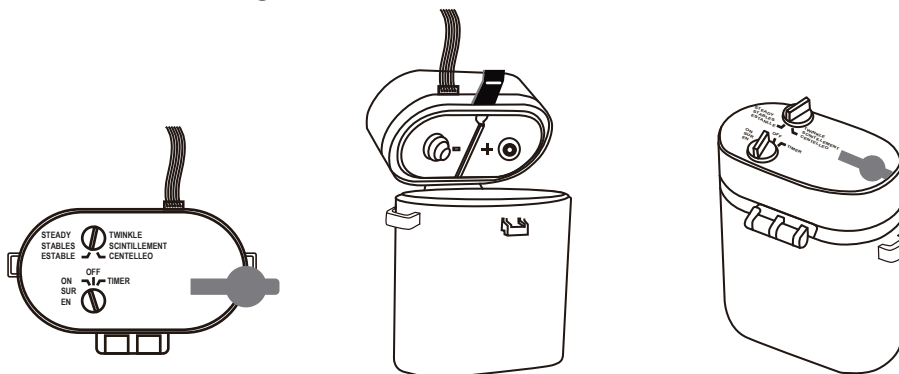
## CAUTION:

To reduce the risk of fire and electric shock:

- Use only the power supply that was provided with this product.
- Do not install on wreaths having needles, leaves or branch covering of metal or materials which look like metal.
- Do not mount or support strings in a manner that can cut or damage wire insulation.

## INSTALLATION:

- Remove all unnecessary packaging materials from the product.
- You will find the battery control box on the back side of this product. Turn the switch to the "OFF" position.
- Open the battery box cover and insert 2 D size batteries (batteries not included).
- Turn the switch to "ON" and the lights will turn on.



## FEATURES:

### Pre-programmable function:

This battery operated control box comes with a pre-set timer function. When you turn the switch to "Timer", the lights will automatically come on and stay lit for 6 hours. The lights will automatically turn off after the 6 hours and remain off for 18 hours. This cycle will then continue as long as the switch is in the timer position.

### Light Functions:

There are two light functions with this control box – Steady & Twinkle

1. Steady – When you turn the switch to “Steady”, the lights will stay lit;
2. Twinkle – When you turn the switch to “Twinkle”, the lights will have a twinkling effect.

### CAUTIONS:

1. Never mix old and new batteries (or different types of batteries).
2. Batteries are to be inserted with the correct polarity.
3. Exhausted batteries should be removed from the battery holder.
4. Never allow any plastic part of this control box to come in contact with any source of heat or flame.
5. Batteries are not included with this product.

### WARNING:

1. For indoor and outdoor use.
2. Do not cover this product with any material when in use.
3. Dispose of all exhausted batteries properly.
4. Non-rechargeable batteries are not to be recharged.
5. Warning: Small parts, keep away from children.
6. Do not expose light set to moisture.
7. Do not mix alkaline, standard (Carbon - Zinc), lithium, or rechargeable (NiCd, NiMH or other type) batteries.
8. Remove batteries when not used for an extended period of time, or when depleted.
9. Dispose of used batteries properly.
10. Use only D-Size (or LR20) batteries for the battery box.
11. Clean the battery contacts prior to battery installation.
12. Do not dispose of batteries in fire. Batteries may explode or leak.

### TROUBLESHOOTING TIPS

**If wreath does not illuminate / Some bulbs do not light or flicker**

Check for loose, broken, or missing bulbs and replace as needed with the replacement bulbs provided.

### STORAGE INSTRUCTIONS:

1. Remove all ornaments and decorations.
2. Disconnect from power source.
3. Detach all light plugs. Then disassemble wreath sections from each other by loosening the eye bolts.
4. Store your wreath in a cool, dry place away from sunlight. Exposure to excessive heat or humidity may damage the wreath.

### SPARE PARTS

If extra parts are needed, please contact our customer service center.

## CUSTOMER SERVICE FOR CHRISTMAS TREES

For any questions, assistance, or missing parts, Do Not Return To Place Of Purchase. Please contact us at +1 (888) 919-0070 or visit our website at [www.polygroupstore.com](http://www.polygroupstore.com). One of our customer service representatives will be happy to assist you.

Tree ID#: \_\_\_\_\_ Customer Name: \_\_\_\_\_

Tree UPC#: \_\_\_\_\_ Address:(No P.O. Boxes) \_\_\_\_\_

Store Purchased: \_\_\_\_\_ City & State: \_\_\_\_\_

Specify Problem: \_\_\_\_\_ Zip Code: \_\_\_\_\_

\_\_\_\_\_ Day Phone: \_\_\_\_\_

\_\_\_\_\_ Date Purchased: \_\_\_\_\_

TREE ID# IS LOCATED ON END PANEL OF BOX. TREE ID# IS REQUIRED WHEN REQUESTING REPLACEMENT PARTS.