

NEED HELP?

DO NOT RETURN TO STORE. PLEASE VISIT US AT:
www.polygroupstore.com OR +1 (888) 919-0070

WREATH ASSEMBLY INSTRUCTIONS

Congratulations on purchasing your new wreath from **Polygroup®!**

Carefully follow the instructions below on how to quickly and easily set up your new wreath.

1. Choose an appropriate location near a wall outlet.

1. Fasten the eye bolts of Part 1 to Part 2. (See **Figure 1**)

2. Fasten the eye bolts of Part 3 to Part 2. (See **Figure 2**)

3. Fasten the eye bolts of Part 4 to Part 3. Fasten the eye bolts of Part 4 to the end-connector of sector 1. (See **Figure 3**)

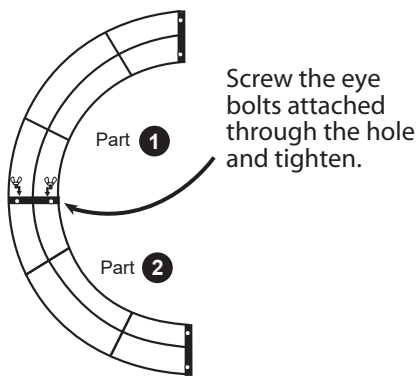


Figure 1

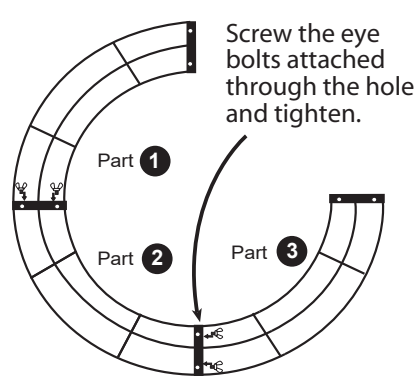


Figure 2

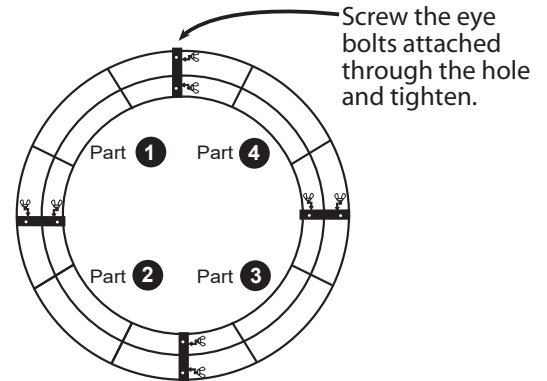


Figure 3

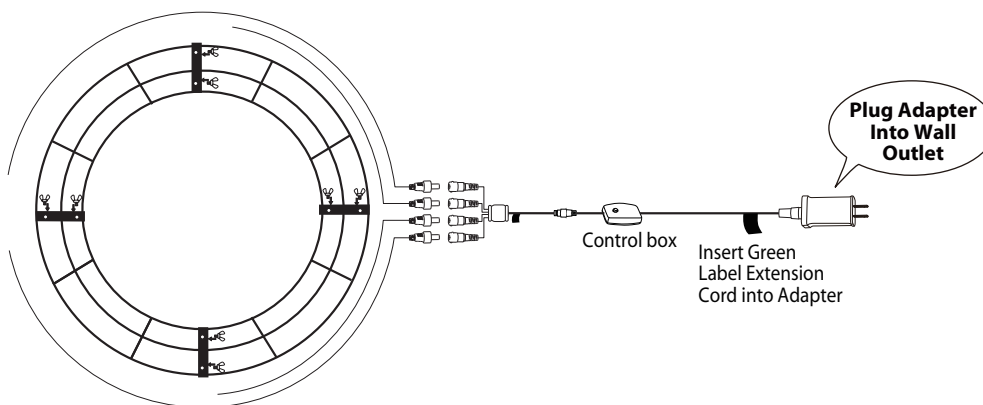
4. Insert the plug of the wreath into the wall outlet to ensure all lights are working before hanging your wreath. The wreath should now be fully lit. Refer to further instructions under TROUBLESHOOTING TIPS below. Unplug the wreath before installing.
5. Shape the wreath by pulling the tips out and upwards to get a fuller look.

*Electrical Rating For The Wreath (For Indoor and outdoor Use)

Input: AC 120V, 60Hz, 0.25A

Output: DC 29V 0.45A

Controller: 0.45A



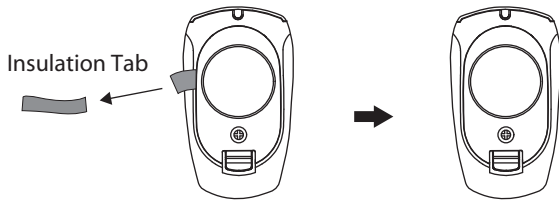
CAUTION:

To reduce the risk of fire and electric shock:

- Use only the power supply that was provided with this product.
- Do not install on wreaths having needles, leaves or branch covering of metal or materials which look like metal.
- Do not mount or support strings in a manner that can cut or damage wire insulation.

REMOTE CONTROL INSTRUCTIONS

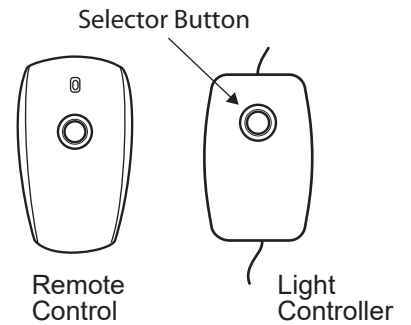
1. Remove the insulation tab of the remote control.
2. Press either selector button and wait for a second to enjoy light effects in the following sequence (see **DUAL COLOR LIGHT CONTROLLER & REMOTE CONTROL**).



DUAL COLOR LIGHT CONTROLLER & REMOTE CONTROL

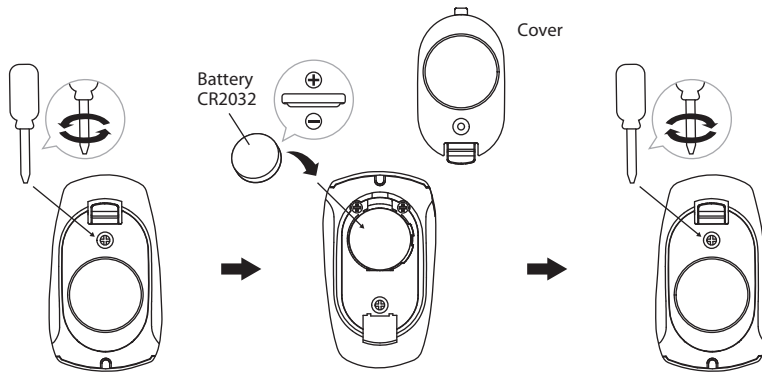
Simply press the selector button to select from the following light functions:

- (1) CLEAR-MULTI: FADING (2) CLEAR: FADING
(3) CLEAR-MULTI: ALTERNATING (4) CLEAR: STEADY
(5) CLEAR-MULTI: SLOW FADING (6) MULTI: STEADY
(7) MULTI: FADING (8) COMBINATION



BATTERY REPLACEMENT

1. Loosen the screw of the battery cover with a screwdriver (not included).
2. Replace the used battery with a new CR2032 button cell battery (not included).
Make sure that the battery is installed with the correct polarity (+ and -).
3. Retighten the screw to close and secure the battery cover.



⚠ WARNING

1. Small parts, keep batteries out of reach of children.
2. Do not expose the remote controller to moisture.
3. Dispose of used batteries properly (by following directions on batteries), and local laws and regulations regarding the disposal of hazardous waste.
4. Clean the battery contact surfaces prior to battery installation.
5. Do not mix old and new batteries.
6. Do not mix alkaline, standard (Carbon - Zinc), lithium, or rechargeable (NiCd, NiMH or other type) batteries.
7. Remove batteries when not used for an extended period of time, or when depleted.
8. Use only CR2032 battery for remote controller.
9. Do not dispose of batteries in fire – batteries may leak or rupture.
10. Non-rechargeable batteries are not to be recharged.
11. This product is powered by a lithium battery. Due to their small size, lithium batteries can easily be swallowed children. Ingestion of such batteries has been known to cause death.
12. This product contains a lithium battery which if swallowed has been known to cause death.



TROUBLESHOOTING TIPS

If wreath does not illuminate / Some bulbs do not light or flicker

1. Check to make sure that all connectors are properly connected, and the adapter is plugged firmly into the wall outlet.
2. Check for loose connection between light string plugs and extension cords.

STORAGE INSTRUCTIONS

1. Remove all ornaments and decorations from the wreath, and unplug from power.
2. Disconnect the extension cords and plugs.
3. Remove the metal hook and fold the wreath.
4. Carefully place all parts into shipping box and tape it shut.
5. Store in a cool, dry place away from sunlight. Exposing your wreath to excessive heat or humidity may damage your wreath.

SPARE PARTS

If extra parts are needed, please contact our customer service center.

CUSTOMER SERVICE FOR CHRISTMAS TREES

For any questions, assistance, or missing parts, Do Not Return To Place Of Purchase. Please contact us at +1 (888) 919-0070 or visit our website at www.polygroupstore.com. One of our customer service representatives will be happy to assist you.

Tree ID#: _____ Customer Name: _____

Tree UPC#: _____ Address:(No P.O. Boxes) _____

Store Purchased: _____ City & State: _____

Specify Problem: _____ Zip Code: _____

_____ Day Phone: _____

_____ Date Purchased: _____

TREE ID# IS LOCATED ON END PANEL OF BOX. TREE ID# IS REQUIRED WHEN REQUESTING REPLACEMENT PARTS.