



Customer / 客户名称

Designer / 设计师

Demand person & department / 需求人&部门

HD USA

yejiezhen

Jane Peng/sales

Production date / 制作日期

Material / 材质

Size / 尺寸

Color / 颜色

2021/03/01

210x148.5mm

BLACK

Confirmation date / 确认日期

Language / 语种

Common / 通用

Special / 专用

EN

L6100010MU01-通用D类电池盒英文说明书

Data Center

Compliance

Marketing

NPD

Sample Room/NPI Dept

Sales Dept

OA

Graphic Team

NA

NA

NA

NA

NA

Date:

Date:

Date:

Date:

Date:

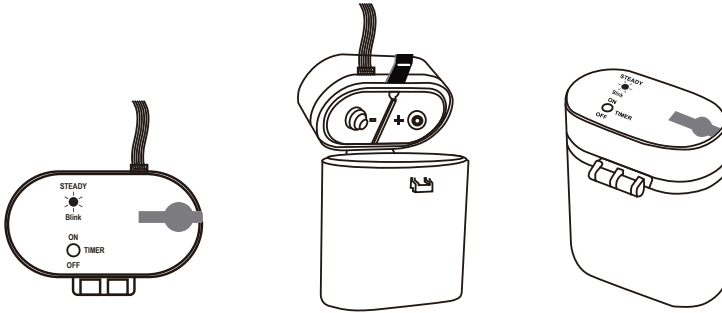
Date:

Date:

Date:

INSTALLATION:

1. Carefully take the product out of the box, and locate the battery control box.
2. Open the battery box, and insert 2 D-size batteries with correct polarities (+/-) as indicated.



FEATURES:

Preset Timer:

This battery-operated control box comes with a preset timer function. Simply press the TIMER button, and the lights will automatically stay ON for 6 hours and then OFF for 18 hours.

Motion Effects:

Simply press the button to choose between 2 preset motion effects:

1. Steady – keep lights staying on
2. Blink – keep lights twinkling

⚠ CAUTIONS:

1. Never mix old and new batteries (or different types of batteries).
2. Do not mix alkaline, standard (Carbon - Zinc), lithium, or rechargeable (NiCd, NiMH or other type) batteries.
3. Batteries are to be inserted with the correct polarity.
4. Exhausted batteries should be removed from the battery holder.
5. Never allow any plastic part of this control box to come in contact with any source of heat or flame.
6. Batteries are not included with this product.
7. Do not dispose of batteries in fire. Batteries may explode or leak.

⚠ WARNING:

1. Do not cover this product with any material when in use.
2. SMALL PARTS, KEEP AWAY FROM CHILDREN.
3. Use only D-size batteries for the battery control box.
4. Clean the battery contacts prior to battery installation.
5. Dispose of used batteries properly by following directions on batteries.
6. Remove batteries when not used for an extended period of time, or when depleted.
7. Do not expose light set to moisture.

If product is malfunctioning, before returning call the Customer Service line: 1-877-527-0313.

IMPORTANT SAFETY INSTRUCTIONS:

When using electrical products, basic precautions should always be followed including the following:

- a) **READ AND FOLLOW ALL SAFETY INSTRUCTIONS**
- b) Do not use the seasonal products outdoors unless marked suitable for indoor and outdoor use.
- c) This seasonal use product is not intended for permanent installation or use.
- d) Do not mount or place near gas or electric heaters, fireplace, candles or other similar source of heat.
- e) Do not secure the wiring of the product with staples or nails, or place on sharp hooks or nails.
- f) Do not let lamps rest on the supply cord or on any wire.
- g) Turn off the product when leaving the house, when retiring for the night, or if left unattended.
- h) This is an electric product - not a Toy! To avoid risk of fire, burns, personal injury and electric shock, it should not be played or placed where small children can reach it.
- i) Do not use this product for other than its intended use.
- j) Do not hang ornaments or other objects from cord, wire, or light string.
- k) Do not close doors or windows on the product or extension cords as this may damage the wire insulation.
- l) Do not cover the product with cloth, paper or any materials not part of the product when in use.
- m) This product is equipped with push-in LED type lamps. Do not twist lamps.
- n) Read and follow all instructions that are on the product or provided with the product.

o) **SAVE THESE INSTRUCTIONS**

USE AND CARE INSTRUCTIONS

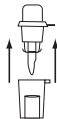
- a) When the product is placed on a live tree, the tree should be well maintained and fresh. Do not place on live trees in which the needles are brown or break off easily, Keep the tree holder filled with water.
- b) If the product is placed on a tree, the tree should be well secured and stable.
- c) Before using or reusing, inspect product carefully. Discard any products that have cut, damaged, or frayed wire insulation or cords, cracks in the lampholders or enclosures, loose connections, or exposed copper wire.
- d) When storing the product, carefully remove the product from wherever it is placed, including tree branches or bushes, to avoid any undue strain or stress on the product conductors, connections, and wires.
- e) When not in use, store neatly in a cool, dry location protected from sunlight.
- f) The LED lamp has polarity. Do not deliberately change the direction of the LED lamp in the lampholder.

USER SERVICING INSTRUCTIONS

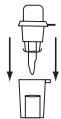
Replace the lamp:

Step 1: Turn off the light.

Step 2: Lift up to unsnap locking tab, then pull lamp and plastic base straight out of lampholder.



Step 3: Replace lamp with only 3.6 Volt, 0.072 Watt LED type lamps provided with this product.



⚠ CAUTION:

To reduce the risk of fire and electric shock: a) Do not install on trees having needles, leaves or branch covering of metal or materials which look like metal, b) Do not mount or support strings in a manner that can cut or damage wire insulation.

Risk of Fire. This product does not contain lamp shunts in order to allow the product to operate if one lamp burns out. Do not replace lamps with other than the spare lamps provided with this product.

For Indoor and outdoor use.

MADE IN CHINA