



## 4.5 ft SMITHTOWN PRE-LIT FISHBONE TIP TREE

### Before You Begin

Please check to make sure you have the following parts

PART	DESCRIPTION	QUANTITY	PART	DESCRIPTION	QUANTITY
A	TREE - TOP	1	C	TREE STAND	1
B	TREE - CENTER	1	D	SPARE PARTS PACKET	1

#### IMPORTANT SAFETY INSTRUCTIONS - READ AND FOLLOW ALL SAFETY INSTRUCTIONS.

When using electrical products, basic precautions should always be followed, including the following:

- Do not use seasonal products outdoors unless marked suitable for indoor and outdoor use. When products are used in outdoor applications, connect the product to a Ground Fault Circuit Interrupting (GFCI) outlet. If one is not provided, contact a qualified electrician for proper installation.
- This seasonal product is not intended for permanent installation or use.
- Do not mount or place the product near gas or electric heaters, fireplaces, candles, or other similar sources of heat.
- Do not secure the wiring of the product with staples or nails, or place on sharp hooks or nails.
- Do not let lamps rest on the supply cord or on any wire.
- Unplug the product when leaving the house, when retiring for the night, or if left unattended.
- This is an electric product-not a toy! To avoid risk of fire, burns, personal injury and electric shock it should not be played with or placed where small children can reach it.
- Do not use this product for other than its intended use.
- \* Do not hang ornaments or other objects from cord, wire, or light string.
- Do not close doors or windows on the product or extensions cords as this may damage the wire insulation.
- Do not cover the product with cloth, paper, or any material that is not a part of the product when in use.
- This product is equipped with push-in type lamps. Do not twist lamps.
- This product employs overload protection (fuse). A blown fuse indicates an overload or short-circuit situation. If the fuse blows, unplug the product from the outlet. Also unplug any additional strings or products that may be attached to the product. Replace the fuse as per the user servicing instructions (follow product marking for proper fuse rating) and check the product. If the replacement fuse blows, a short-circuit may be present and the product should be discarded.

Read and follow all instructions that are on the product or provided with the product. **SAVE THESE INSTRUCTIONS.**

#### FCC NOTICES:

**WARNING:** Changes or modifications to this unit not expressly approved by the party responsible for compliance could void the user's authority to operate the equipment.

**NOTE:** This equipment has been tested and found to comply with the limits for a Class B digital device, pursuant to Part 15 of the FCC Rules. These limits are designed to provide reasonable protection against harmful interference in a residential installation. This equipment generates, uses and can radiate radio frequency energy and, if not installed and used in accordance with the instructions, may cause harmful interference to radio communications. However, there is no guarantee that interference will not occur in a particular installation. If this equipment does cause harmful interference to radio or television reception, which can be determined by turning the equipment off and on, the user is encouraged to try to correct the interference by one or more of the following measures:

- Reorient or relocate the receiving antenna.
- Increase the separation between the equipment and receiver.
- Connect the equipment into an outlet on a circuit different from that to which the receiver is connected.
- Consult the dealer or an experienced radio/TV technician for help.

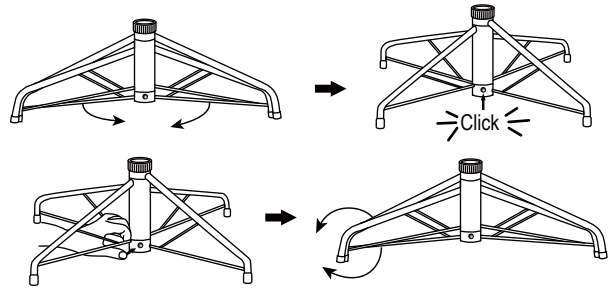
This device complies with Part 15 of the FCC Rules. Operation is subject to the following two conditions:

1. this device may not cause harmful interference, and
2. this device must accept any interference received, including interference that may cause undesired operation.

# Assembly / Operation Instructions

## ASSEMBLING THE TREE STAND

- Step 1. Choose a location near a wall outlet.
- Step 2. Unfold the legs of the tree stand (C) and lay the stand on the floor.
- Step 3. To close the stand (C), press the metal button and fold the legs together.



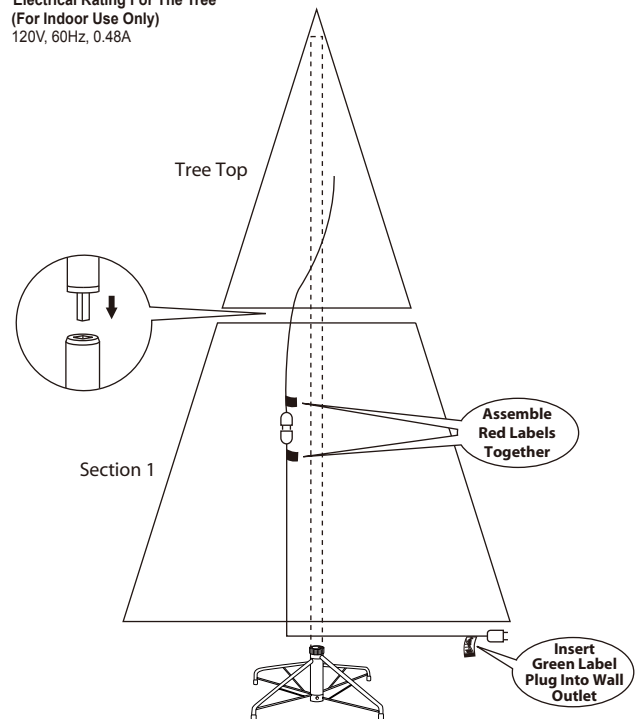
## ASSEMBLING THE TREE

- Step 1. Remove the protective caps from the tree bottom and insert the pole into the tree stand.
- Step 2. Continue by inserting the upper tree section(s) to the lower section(s) until inserting the tree top.
- Step 3. Shape the branches to your preference by working from the bottom to the top. When adjusting branches, ensure that all wires are free of branch hinges.
- Step 4. Plug the extension cord into the wall outlet. All your lights should now be lit.
- Step 5. Shape the tree from the bottom to the top. Start with the branches farthest from the pole – fan out in a star shape, and continue until the entire tree is shaped.



- Step 6. Just slightly upsweep and shift branches to fill in any gaps for a fuller, uniform look. Your Christmas tree is now ready to be decorated.

\* Electrical Rating For The Tree  
(For Indoor Use Only)  
120V, 60Hz, 0.48A



# Troubleshooting / Storage / Maintenance Instructions

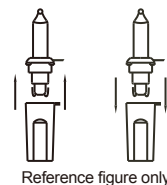
## TROUBLESHOOTING TIPS

FOR PRE-LIT TREES, IF THE TREE DOES NOT ILLUMINATE

1. Please check to make sure that all connectors are properly connected and the power adapter cord is plugged into the wall outlet.
2. Check for loose connection between light string plugs and extension cords.
3. Please check for loose, broken or missing light bulbs and replace as needed.

## LAMP REPLACEMENT

- Step 1. Grasp the power adapter or power cord plug, and then unplug from the power outlet. Do not pull the power cord.
- Step 2. Lift up lamp lock tab, then pull the lamp and plastic lamp base straight out of the lamp-holder.
- Step 3. Replace with a new lamp provided with products.



## REPAIRING LOOSE HINGES

- Step 1. Place the branch into the slot of the bracket.
- Step 2. Insert a new hinge pin through the holes of the bracket and secure with a washer.



## MAINTENANCE

SPARE PARTS: This tree package includes hinge pins, washers, bulbs for any replacement or repair that you need to perform on your tree. If extra parts are needed, contact the Customer Service Team at 1-888-919-0070 between the hours of 8 am and 5 pm MST, Monday through Friday.