

NEED HELP?

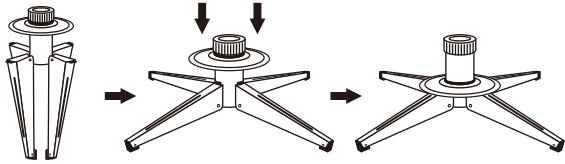
DO NOT RETURN TO STORE. PLEASE VISIT US AT:
www.polygroupstore.com OR 1-888-919-0070

TREE ASSEMBLY INSTRUCTIONS

Congratulations on purchasing your new tree from **Polygroup®**! This tree comes with Quick Set® technology, allowing you to set up and light up your tree in less than 10 minutes! Carefully follow the instructions below on how to quickly and easily set up your new tree.

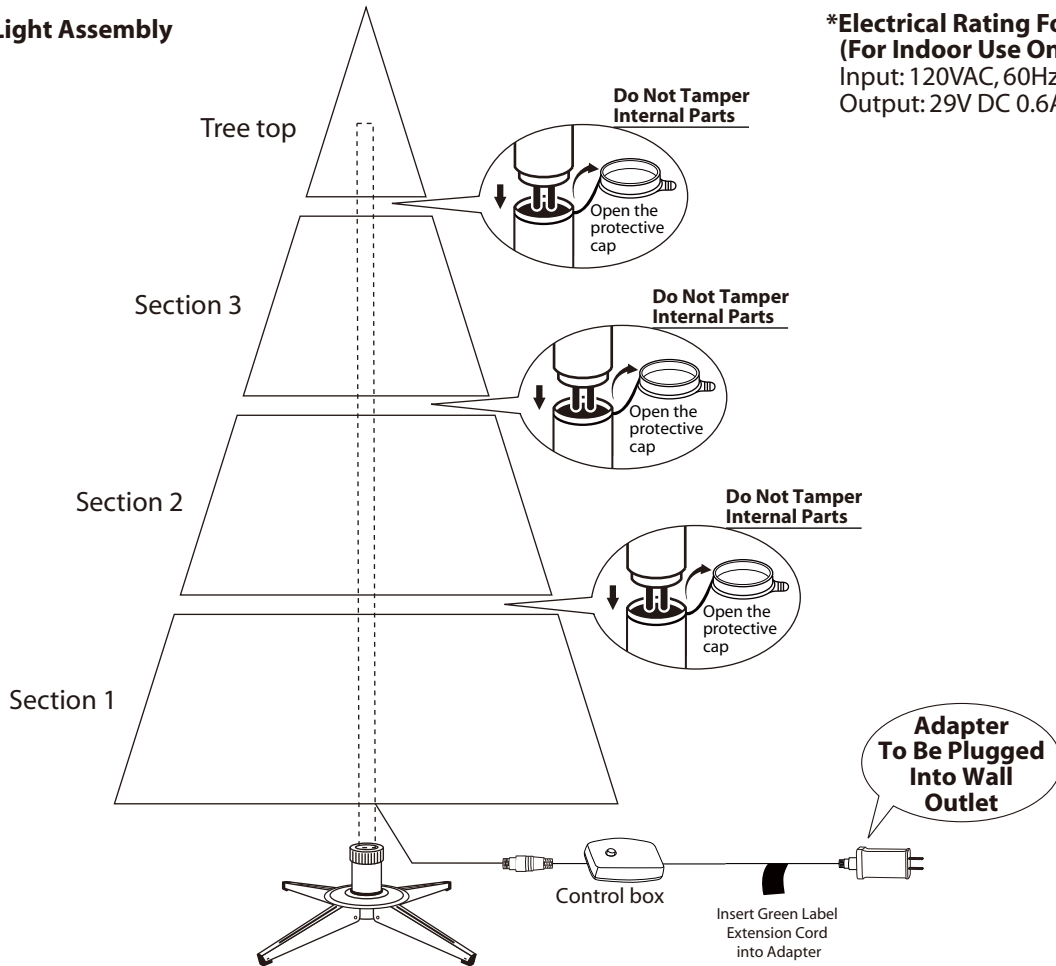
1. Before you start to assemble your tree, choose an appropriate location near a wall outlet.
2. Assemble the tree stand and place on a level surface. (See Fig. A)

Fig. A - Tree Stand Assembly



Unfold the legs and lay the stand in a flat area. Then slide the locking disc downward and snap into place.

Fig. B - Tree and Light Assembly

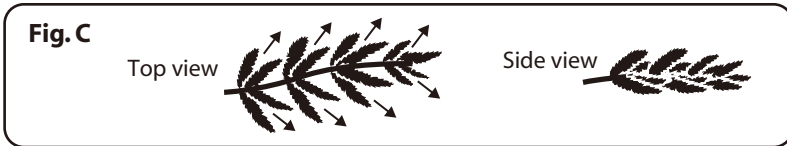


***Electrical Rating For The Tree (For Indoor Use Only)**

Input: 120VAC, 60Hz, 0.36A
Output: 29V DC 0.6A

3. Each tree section is numbered with a sticker. Please identify all sections before assembling.
4. Assemble the tree from the bottom to the top. Start with the bottom section and remove protective cap before inserting into the assembled stand. Make sure the pole is firmly inserted and secured into the stand.
5. Continue by inserting the upper tree section(s) to the lower section(s) until inserting the tree top.
6. Allow branches to fall into place or gently pull up and out. When adjusting branches, be sure that all wires are free of branch hinges.
7. Insert green label extension cord into adapter and adapter insert into the wall outlet. (See Fig. B), your entire tree should now be lit. If some bulbs do not light or flickers, search for any loose plugs and/or broken, loose or missing bulbs. Connecting the plugs or replace the bad bulbs promptly in order to maintain the performance and life expectancy of your pre-lit tree.

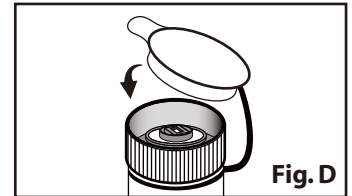
- Begin to shape the branches and tips working from the bottom to the top. Start with tips farthest from the pole and fan out one to the right, one to the left and one at the center of the main stem. **(See Fig. C)**



- After shaping the entire tree following the previous step, slightly upsweep all branch tips for a uniform look. Shift branches to fill any gaps. Your Christmas tree is now complete and ready to be decorated.

STORAGE INSTRUCTIONS

- Unplug adapter from the wall outlet first and then remove all ornaments and decorations.
- Disassemble the tree from the top to the bottom. Start with the tree top and gently lift straight up to remove from section below and fold all branches upwards toward the pole.
- Continue by gently lifting each section straight up from the section below and fold all branches upwards toward the pole until the bottom section is removed from the tree stand. Cover the protective cap on the poles to avoid damaging the internal parts. **(See Fig. D)**
- Carefully place all tree sections into shipping box and tape it shut.
- When not in use, please store your tree in a cool, dry place away from sunlight. Exposing your tree to excessive heat or humidity may damage your tree.
- Keep out of reach of pets and children.



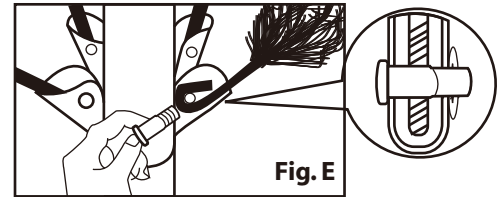
TROUBLESHOOTING TIPS

For Pre-lit Trees, If The Tree Does Not Illuminate

- Please check to make sure that all plugs are properly connected and power adapter is plugged into the wall outlet.
- Turn the poles gently to make sure pole to sections pole are connected properly.
- Check for loose connection between light string plugs and extension cords.
- Please check for loose, broken or missing light bulbs and replace as needed.

Loose Hinge Pin

- Extra hinge pins are included for repairs, if needed. Place the branch into the slot of the bracket.
- Insert a new hinge pin through the hole and secure using the retainer washer. **(See Fig. E)**

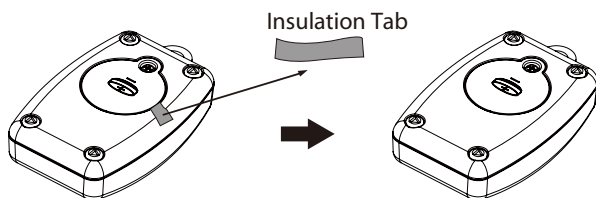


SPARE PARTS

Each tree includes additional hinge pins/washers, and for pre-lit trees spare bulbs are also included. If extra parts are needed, please contact our customer service center.

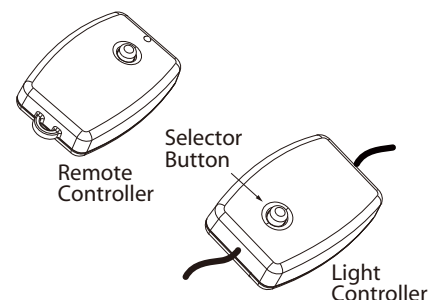
REMOTE CONTROL INSTRUCTIONS

- Remove the insulation tab.
- Press the button to select from different light functions (see **DUAL COLOR LIGHT CONTROLLER & REMOTE CONTROL**).



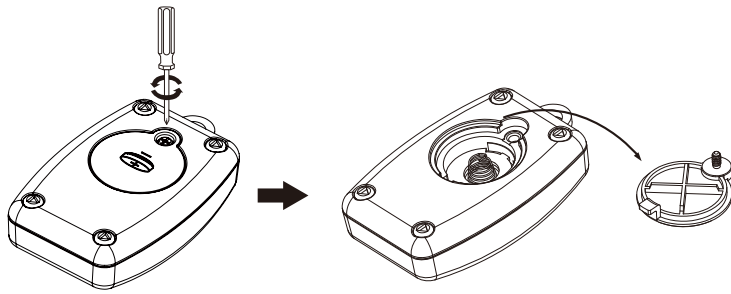
DUAL COLOR LIGHT CONTROLLER & REMOTE CONTROL

Press the selector button on the "Dual Color Light Controller" or "Remote Controller" to select among: **(1) CLEAR - MULTI: FADING (2) CLEAR: FADING (3) CLEAR - MULTI: ALTERNATING (4) CLEAR: STEADY (5) CLEAR - MULTI: SLOW FADING (6) MULTI: STEADY (7) MULTI: FADING (8) COMBINATION**



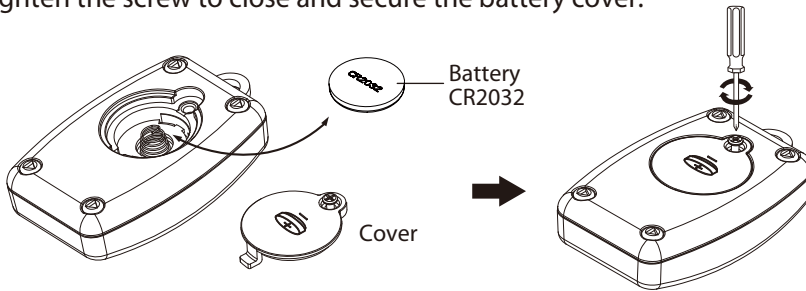
BATTERY REPLACEMENT

1. Loosen the screw of the battery cover with a screwdriver (not included).



2. Replace the used battery with a new CR2032 button cell battery (not included). Make sure that the battery is installed with the correct polarity (+ and -).

3. Retighten the screw to close and secure the battery cover.



⚠ WARNING

1. DISPOSE USED BATTERY PROPERLY. OBSERVE LOCAL REGULATIONS REGARDING DISPOSAL OF HAZARDOUS WASTE.
2. ENSURE THE BATTERIES ARE INSTALLED CORRECTLY WITH REGARD TO POLARITY (+ AND -).
3. This product is powered by a lithium battery. Due to their small size, lithium batteries can easily be swallowed by children. Ingestion of such batteries has been known to cause death.
4. This product contains a lithium battery which if swallowed has been known to cause death.
5. DO NOT EXPOSE LIGHT SET TO MOISTURE.
6. REMOVE BATTERIES WHEN NOT USED FOR AN EXTENDED PERIOD OF TIME, OR WHEN DEPLETED.
7. CLEAN THE BATTERY CONTACTS PRIOR TO BATTERY INSTALLATION.
8. The external flexible cable or cord of this luminaire cannot be replaced; If the cord is damaged, the luminaire shall be destroyed.
9. Dispose of used batteries properly by following directions on batteries.
10. Use only CR2032 batteries for the remote controller.
11. DO NOT DISPOSE OF BATTERIES IN FIRE. BATTERIES MAY EXPLODE OR LEAK.

CAUTION:

1. To reduce the risk of fire and electric shock:
 - a) Use only the power supply that was provided with this product;
 - b) Do not install on trees having needles, leaves or branch covering of metal or materials which look like metal, and
 - c) Do not mount or support strings in a manner that can cut or damage wire insulation.
2. Use only the adapter supplied with this product. Using a different adapter will damage the lights and may cause fire, or electrical shock hazards.

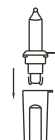
Lamp Replacement

Step 1. Unplug from power source, by pulling out the adapter itself - do not pull on the power cord.

Step 2. Lift up the lamp lock tab, and pull the bulb and its plastic base straight out from the lampholder.



Step 3. Replace with a new spare LED lamp (included).



(For reference only)

CUSTOMER SERVICE FOR CHRISTMAS TREES

For any questions, assistance, or missing parts, **Do Not Return To Place Of Purchase**. Please contact us at 1-888-919-0070 or visit our website at www.polygroupstore.com. One of our customer service representatives will be happy to assist you. Proof of purchase is required for warranty.

Tree ID#: _____

Customer Name: _____

Tree UPC#: _____

Address(No P.O. Boxes): _____

Store Purchased: _____

City & State: _____

Specify Problem: _____

Zip Code: _____

Day Phone: _____

Date Purchased: _____

TREE ID# IS LOCATED ON END PANEL OF BOX. TREE ID# IS REQUIRED WHEN REQUESTING REPLACEMENT PARTS.