

NEED HELP?

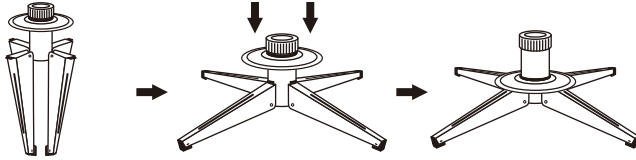
DO NOT RETURN TO STORE. PLEASE VISIT US AT:
www.polygroupstore.com OR 1-888-919-0070

TREE ASSEMBLY INSTRUCTIONS

Congratulations on purchasing your new tree from **Polygroup®**. This tree comes with Quick Set® technology, allowing you to set up and light up your tree in less than 10 minutes! Carefully follow the instructions below on how to quickly and easily set up your new tree.

1. Before you start to assemble your tree, choose an appropriate location near a wall outlet.
2. Assemble the tree stand and place on a level surface. (See Fig. A)

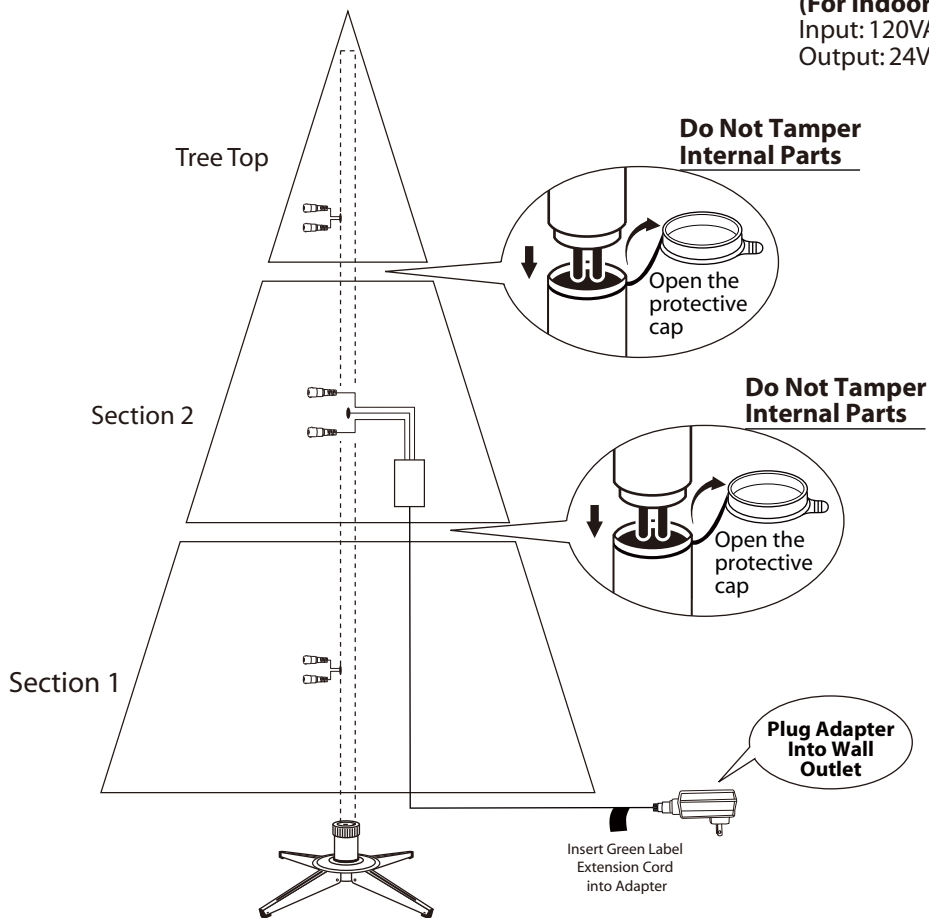
Fig. A - Tree Stand Assembly



Unfold the legs and lay the stand in a flat area. Then slide the locking disc downward and snap into place.

Fig. B - Tree and Light Assembly

***Electrical Rating For The Tree
(For Indoor Use Only)**
Input: 120VAC, 60Hz, 0.83A
Output: 24V DC 2A



3. Identify all tree sections (See Fig. B) by the stickers on them, and start assembling from bottom to top.
4. Open the protective cap of pole, and insert the pole into the stand. Allow all branches fall down into place. Check to make sure that all wires are free from branch hinges.
5. Shape the tree section one branch at a time. Start with the tips closest to the pole and move outwards. Fan all the tips out in alternating directions, and slightly upsweep them for a natural look (See Fig. C).

Fig. C

Top view



Side view



6. Repeat **Step 4 and 5** for the upper tree section(s) until tree top is installed and shaped.
7. Connect plug with adapter, and plug it in to the wall outlet as indicated in **Fig. B**.
8. Step back and view your tree. Shift branches to fill any gaps. Your Christmas tree is now ready to be decorated.

STORAGE INSTRUCTIONS

1. Unplug from power source, and detach plug from adapter. Remove all ornaments and decorations.
2. Disassemble the tree from top to bottom. Gently lift pole straight up to remove from the lower section, and fold all branches toward the pole.
3. Close the protective caps on the poles to avoid damaging the internal parts (**See Fig. D**).
4. Place the disassembled tree into the shipping box and tape it shut.
5. Store your tree in a cool, dry place away from sunlight. Exposure to excessive heat or humidity may damage your tree.
6. Keep out of reach of pets and children.



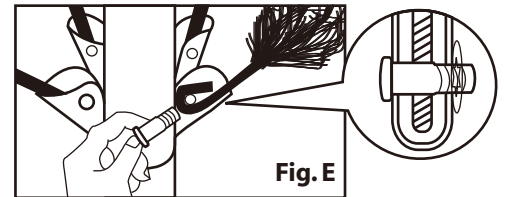
TROUBLESHOOTING TIPS

For Pre-lit Trees, If The Tree Does Not Illuminate

1. Please check to make sure that all plugs are properly connected and adapter is plugged into the wall outlet.
2. Turn the poles gently to make sure pole to pole sections are connected properly
3. Check for loose connection between light string plugs and extension cords.
4. Check for loose, broken or missing bulbs, and replace as needed (**See LAMP REPLACEMENT**).

Loose Hinge Pin

1. Place the branch into the hinge bracket (**See Fig. E**).
2. Insert a new hinge pin all through the holes of bracket, and secure with a washer (**See Fig. E - close up**).



SPARE PARTS

This tree includes sets of hinge pins & washers, and spare bulbs. If extra parts are needed, please contact our customer service center.

CAUTION:

1. To reduce the risk of fire and electric shock:
 - a) Use only the power supply that was provided with this product;
 - b) Do not install on trees having needles, leaves or branch covering of metal or materials which look like metal, and
 - c) Do not mount or support strings in a manner that can cut or damage wire insulation.
2. Use only the adapter supplied with this product. Using a different adapter will damage the lights and may cause fire, or electrical shock hazards.

Lamp Replacement

Step 1. Unplug from power source, by pulling out the adapter itself - do not pull on the power cord.

Step 2. Lift up the lamp lock tab, and pull the bulb and its plastic base straight out from the lampholder.



Step 3. Replace with a new spare LED lamp (included).



(For reference only)

CUSTOMER SERVICE FOR CHRISTMAS TREES

For any questions, assistance, or missing parts, **Do Not Return To Place Of Purchase**. Please contact us at 1-888-919-0070 or visit our website at www.polygroupstore.com. One of our customer service representatives will be happy to assist you. Proof of purchase is required for warranty.

Tree ID#: _____

Customer Name: _____

Tree UPC#: _____

Address(No P.O. Boxes): _____

Store Purchased: _____

City & State: _____

Specify Problem: _____

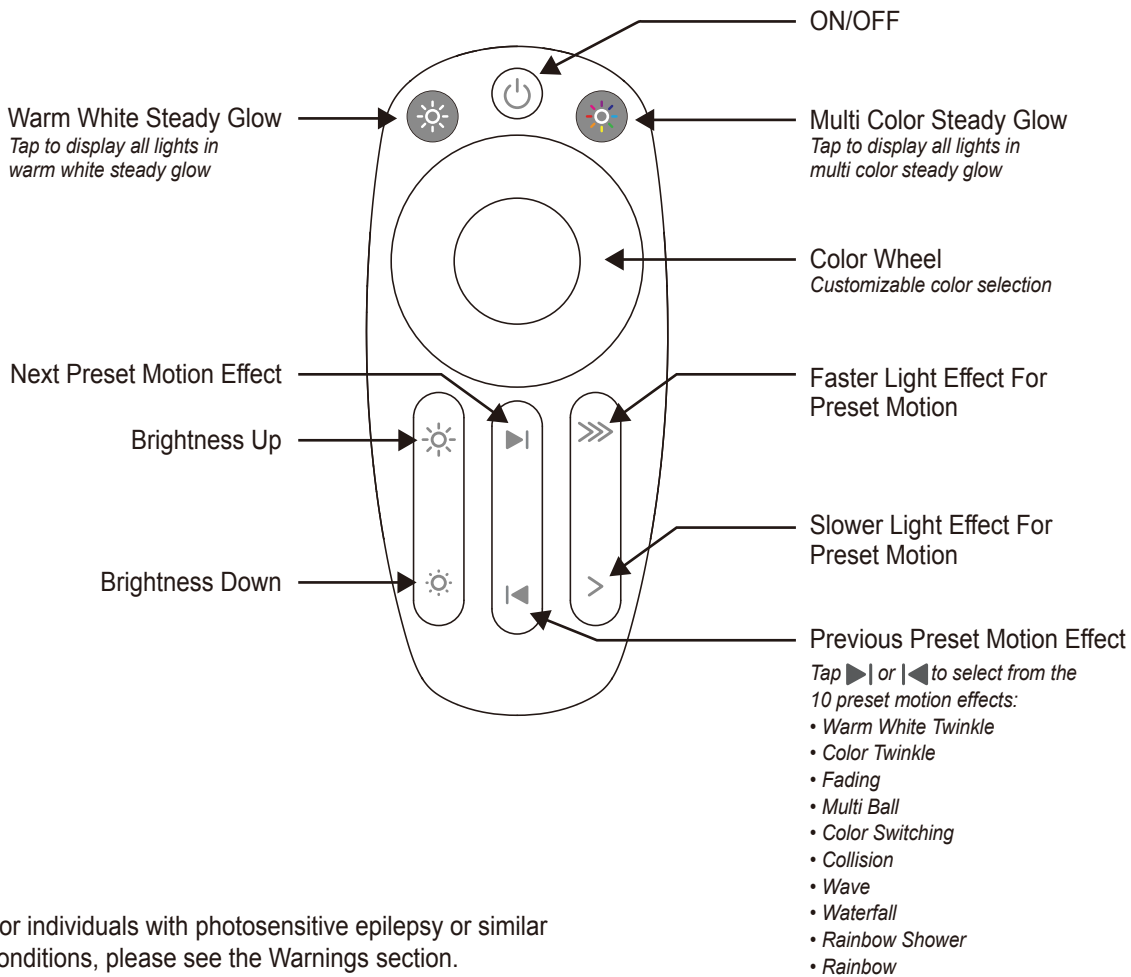
Zip Code: _____

Day Phone: _____

Date Purchased: _____

TREE ID# IS LOCATED ON END PANEL OF BOX. TREE ID# IS REQUIRED WHEN REQUESTING REPLACEMENT PARTS.

REMOTE CONTROL INSTRUCTIONS



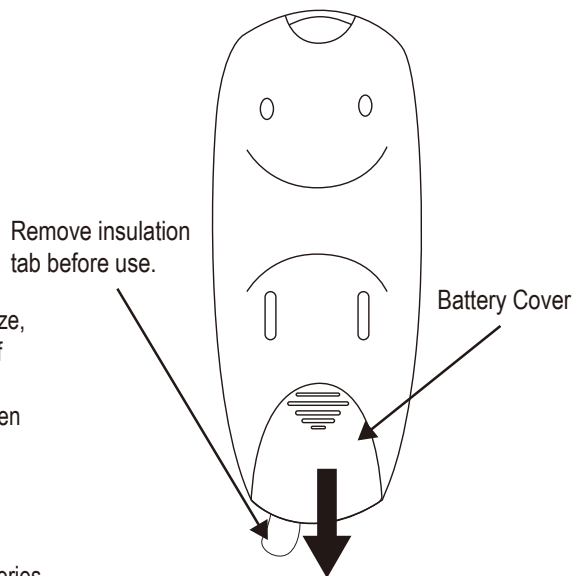
For individuals with photosensitive epilepsy or similar conditions, please see the Warnings section.

Battery Replacement

1. Slide open the battery cover.
2. Replace with a new CR2032 button cell battery with correct polarities (+/-) as indicated.
3. Slide the battery cover closed.

⚠ WARNING

1. This product is powered by a lithium battery. Due to their small size, lithium batteries can easily be swallowed by children. Ingestion of such batteries has been known to cause death.
2. This product contains a lithium battery which if swallowed has been known to cause death.
3. Do not expose the product to moisture.
4. Remove batteries when not used for an extended period of time, or when depleted.
5. Dispose of used batteries properly by following directions on batteries.
6. Use only CR2032 batteries for the remote controller.
7. Clean the battery contact surfaces gently prior to battery installation.
8. DO NOT DISPOSE OF BATTERIES IN FIRE. BATTERIES MAY EXPLODE OR LEAK.



WARNING: This product may potentially trigger seizures for people with photosensitive epilepsy when using the motion effect light modes.