

NEED HELP?

DO NOT RETURN TO STORE. Call: 1-877-527-0313
 Form 8am to 5pm EST, Monday through Friday.

Safety Information

IMPORTANT SAFETY INSTRUCTIONS

When using electrical products, basic precautions should always be followed, including the following:

- a. **READ AND FOLLOW ALL SAFETY INSTRUCTIONS.**
- b. Do not use seasonal products outdoors unless marked suitable for indoor and outdoor use. When products are used in outdoor applications, connect the product to a Ground Fault Circuit Interrupting (GFCI) outlet. If one is not provided, contact a qualified electrician for proper installation.
- c. This seasonal product is not intended for permanent installation or use.
- d. Do not mount or place the product near gas or electric heaters, fireplaces, candles, or other similar sources of heat.
- e. Do not secure the wiring of the product with staples or nails, or place on sharp hooks or nails.
- f. Do not let lamps rest on the supply cord or on any wire.
- g. Unplug the product when leaving the house, when retiring for the night, or if left unattended.
- h. This is an electric product and not a toy! To avoid risk of fire, burns, personal injury and electric shock it should not be played with or placed where small children can reach it.
- i. Do not use this product for other than its intended use.
- j. Do not hang ornaments or other objects from cord, wire, or light string.
- k. Do not close doors or windows on the product or extensions cords as this may damage the wire insulation.
- l. Do not cover the product with cloth, paper, or any material that is not a part of the product when in use.
- m. This product is equipped with push-in type lamps. Do not twist lamps.
- n. Read and follow all instructions that are on the product or provide with the product.

o. SAVE THESE INSTRUCTIONS

Pre-Assembly

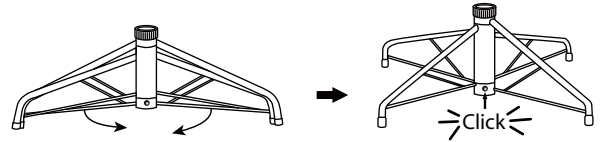
Package Contents

Part	Description	Quantity
A	Tree top	1
B	Tree center, Sticker 3	1
C	Tree center, Sticker 2	1
D	Tree center, Sticker 1	1
E	Tree stand	1

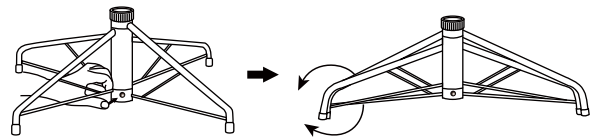
Assembly

Assembling the tree stand

- Step 1.** Pull apart the legs of the stand so that they are snapped into an x-shape, place the tree stand on a level surface.
- Step 2.** When inserting the bottom section of the tree into the assembled stand, insert and turn the eyebolts into the stand and tighten until the tree pole is firmly secured.



To close the stand, remove the eyebolts, press the metal button and fold the legs together.



Assembling the tree

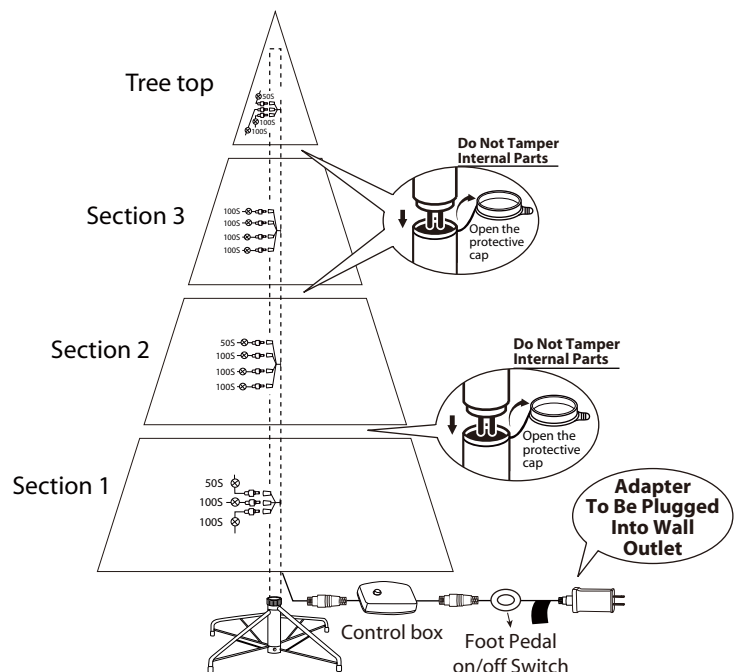
This tree assembles with Quick Set® technology

---Set up and light up your tree in less than 10 minutes!

- Step 1.** Remove the protective caps from the tree bottom and insert the pole into the tree stand.
- Step 2.** Continue by inserting the upper tree section(s) to the lower section(s) until inserting the tree top.
- Step 3.** Shape the branches to your preference by working from the bottom to the top. When adjusting branches, ensure that all wires are free of branch hinges.
- Step 4.** Insert the adapter into the wall outlet. All your lights should now be lit.
- Step 5.** Shape the tree from the bottom to the top. Start with the branches farthest from the pole – fan out in a star shape, and continue until the entire tree is shaped.



- Step 6.** When finished shaping the branches, slightly upsweep all branch tips for a uniform look.



LAMP REPLACEMENT

Step 1. Grasp the power adapter or power cord plug, and than unplug from the power outlet. Do not pull the power cord.

Step 2. Lift up lamp lock tab, then pull the lamp and plastic lamp base straight out of the lamp-holder.



Step 3. Replace with a new spare lamp provided with this product.



(Reference figure only)

Operation

Turning on the tree

NOTE: If some bulbs do not light or flicker, search for any loose plugs and/or broken, loose, or missing bulbs. Replace bulbs promptly with the replacement bulbs provided in order to maintain the performance and life expectancy of your tree.

Step 1. Connect the light strings of the tree together and plug the adapter into a wall outlet.

Step 2. If the tree comes with a foot pedal, step on the On/Off button.

Maintenance

Spare parts

This tree package includes hinge pins, washers and bulbs for any replacement or repair that you need to perform on your tree. If extra parts are needed, contact the Customer Service Team at 1-877-527-0313 between the hours of 8 am and 5 pm EST, Monday through Friday.

Repairing Loose Hinges

Step 1. Place the branch into the slot of the bracket

Step 2. Insert a new hinge pin through the holes of the bracket and secure with a washer.

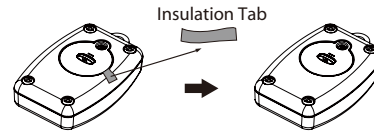
Use and Care Instructions

- Before using or reusing, inspect product carefully. Discard any products that have cut, damaged or frayed wire insulation or cords, cracks in the lampholders or enclosures, loose connections, or exposed copper wire.
- Before disassembling the tree, unplug the tree and remove all ornaments and decorations.
- Gently lift the tree top straight up to remove from the center section and fold all branches towards the pole.
- Repeat this step for the center and bottom tree sections.
- When storing the product, carefully remove the product from wherever it is placed, including tree, branches, or bushes, to avoid any undue strain or stress on the product conductors, connections, and wires. Cover the protective cap on the poles to avoid damaging the internal parts.
- When not in use, store neatly in a cool, dry location protected from sunlight.
- Keep out of reach of pets and children.



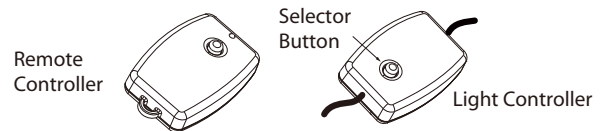
Remote Control Instructions

- Remove the insulation tab of the remote control.
- Press either selector button and wait for a second to enjoy light effects in the following sequence (see **DUAL COLOR LIGHT CONTROLLER & REMOTE CONTROL**).



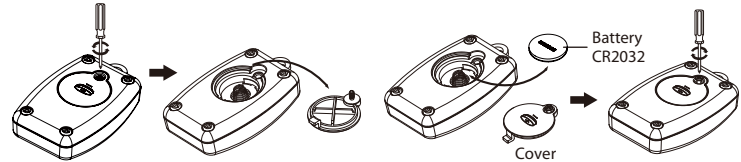
DUAL COLOR LIGHT CONTROLLER & REMOTE CONTROL

Simply press the selector button to select from the following light functions: (1) **CLEAR - MULTI: FADING** (2) **CLEAR: FADING** (3) **CLEAR - MULTI: ALTERNATING** (4) **CLEAR: STEADY** (5) **CLEAR - MULTI: SLOW FADING** (6) **MULTI: STEADY** (7) **MULTI: FADING** (8) **COMBINATION**



BATTERY REPLACEMENT

- Loosen the screw of the battery cover with a screwdriver (not included).
- Replace the used battery with a new CR2032 button cell battery (not included). Make sure that the battery is installed with the correct polarity (+ and -).
- Retighten the screw to close and secure the battery cover.



WARNING

- Dispose used battery properly. observe local regulations regarding disposal of hazardous waste.
- Ensure the batteries are installed correctly with regard to polarity (+ and -).
- This product is powered by a lithium battery. Due to their small size, lithium batteries can easily be swallowed by children. Ingestion of such batteries has been known to cause death.
- Do not expose light set to moisture.
- Remove batteries when not used for an extended period of time, or when depleted.
- Clean the battery contacts prior to battery installation.
- The external flexible cable or cord of this luminaire cannot be replaced; If the cord is damaged, the luminaire shall be destroyed.
- Dispose of used batteries properly.
- Use only CR2032 batteries for the remote controller.
- DO NOT DISPOSE OF BATTERIES IN FIRE. BATTERIES MAY EXPLODE OR LEAK.

CAUTION:

Use only power adapter that was provided with this product. Using a different power adapter will damage the lights and cause fire, electrical shock hazard.

Troubleshooting

Problem	Solution
The tree does not light	Ensure that all tree sections are plugged into each other and that the tree is plugged into the wall. If your tree came with a foot pedal, step on the On/Off button.
	Check for loose, broken, or missing bulbs and replace as needed with the replacement bulbs provided