

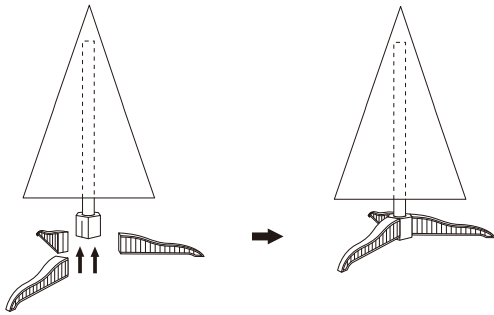
## TREE ASSEMBLY INSTRUCTIONS

Congratulations on purchasing your new tree from **Polygroup®!**

Carefully follow the instructions below on how to set up your new tree quickly and at ease:

1. Choose your desired spot for setting up the tree.
2. Assemble the tree stand (**Fig. A**) and place on a level surface (**Fig. B**).

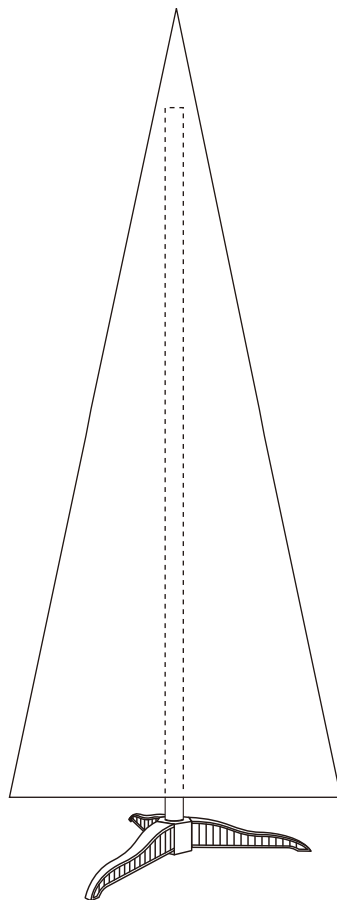
**Fig. A - Tree Stand Assembly**



Slide the legs up into the slots of the base until firmly secured.

**Fig.B - Tree Assembly**

**\*For Indoor Use Only**



3. Shape the tree from the bottom to the top. Start with the branches farthest from the pole – fan out in a star shape (**Fig. C**), and continue until the entire tree is shaped.

**Fig. C**

Top view



Side view



4. Slightly upsweep all branch tips for a fuller, uniform look. Shift branches to fill in any gaps. Your Christmas tree is now ready to be decorated.

## STORAGE INSTRUCTIONS

1. Remove all ornaments and decorations.
2. Disassemble the tree stand legs from the base. Fold all branches toward the pole.
3. Carefully place the tree into the shipping box and tape it shut.
4. Store your tree in a cool, dry place away from sunlight. Exposure to excessive heat or humidity may damage your tree.

### CUSTOMER SERVICE FOR CHRISTMAS TREES

For any questions, assistance or missing parts, **Do Not Return To Place Of Purchase.** Please contact us at 1-888-919-0070 or visit our website at [www.polygroupstore.com](http://www.polygroupstore.com). One of our customer service representatives will be happy to assist you.

Tree ID#: \_\_\_\_\_ Customer Name: \_\_\_\_\_

Tree UPC#: \_\_\_\_\_ Address (NO P.O. Boxes): \_\_\_\_\_

Store Purchased: \_\_\_\_\_ City & State: \_\_\_\_\_

Specify Problem: \_\_\_\_\_ Zip Code: \_\_\_\_\_

\_\_\_\_\_ Day Phone: \_\_\_\_\_

\_\_\_\_\_ Date Purchased: \_\_\_\_\_

**TREE ID# IS LOCATED ON END PANEL OF BOX. TREE ID# IS REQUIRED WHEN REQUESTING REPLACEMENT PARTS.**