

TREE ASSEMBLY INSTRUCTIONS

Congratulations on purchasing your new tree from **Polygroup®**! This tree comes with Quick Set® technology - it takes less than 10 minutes to set up and light up! Carefully follow the instructions below on how to quickly and easily set up your new tree:

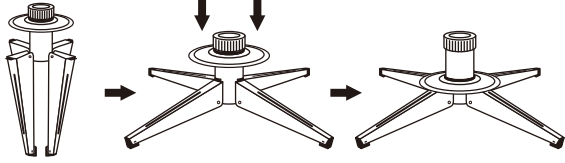
1. Choose a level surface near a wall outlet.
2. Assemble the tree stand (See Fig. A).



Please scan code to learn how to shape and set up your tree

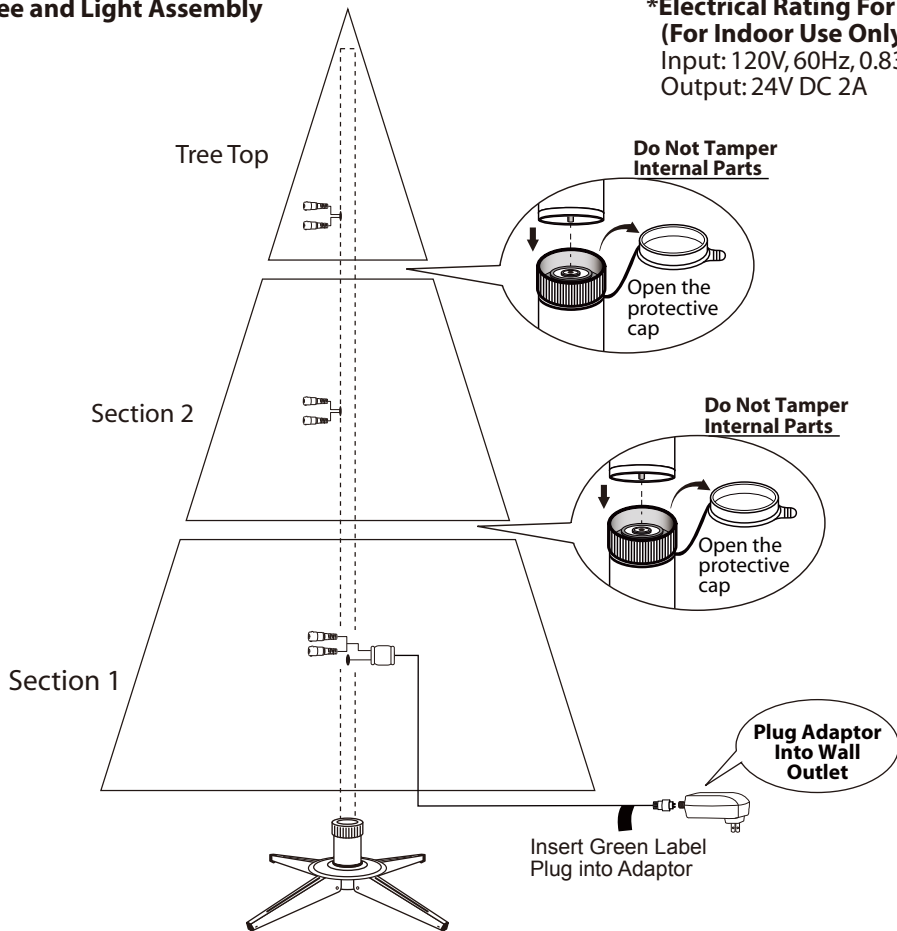
ASSEMBLY INSTRUCTIONS

Fig. A - Tree Stand Assembly



Unfold tree stand legs. Then slide the locking disc down until it snaps into place.

Fig. B - Tree and Light Assembly



3. Identify all tree sections (See Fig. B) by the tags on them, and start assembling from bottom to top.
4. Open the protective cap of pole, and insert the pole into the stand. Allow all branches fall down into place. Check to make sure that all wires are free from branch hinges.
5. Shape the tree section one branch at a time. Start with the tips closest to the pole and move outwards. Fan all the tips out in alternating directions, and slightly upsweep them for a natural look (See Fig. C).

Fig. C

Top view



Side view



6. Repeat **Step 4 and 5** for the upper tree section(s) until tree top is installed and shaped.
7. Connect plug with adaptor, and plug it in to the wall outlet as indicated in **Fig. B**. Your tree should now be lit. If not, please see **TROUBLESHOOTING TIPS**.
8. Step back and view your tree. Shift branches to fill any gaps. Your Christmas tree is now ready to be decorated.

MADE IN CHINA

STORAGE INSTRUCTIONS

1. Unplug from power source, and detach plug from adaptor. Remove all ornaments and decorations.
2. Disassemble the tree from top to bottom. Gently lift pole straight up to remove from the lower section, and fold all branches toward the pole.
3. Close the protective caps on the poles to avoid damaging the internal parts **(See Fig. D)**.
4. Place the disassembled tree into the shipping box and tape it shut.
5. Store your tree in a cool, dry place away from sunlight. Exposure to excessive heat or humidity may damage your tree.



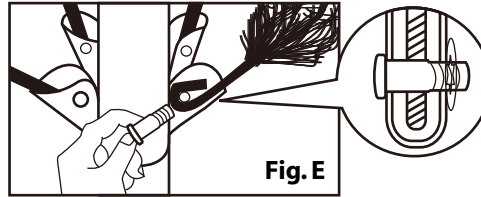
TROUBLESHOOTING TIPS

If Tree Does Not Illuminate / Some Bulbs Do Not Light or Flicker

1. Check to make sure that all plugs and adaptor are properly connected as indicated in **Fig. B**.
2. Turn the poles gently to make sure pole-to-pole connection is secured.

Loose Hinge Pin

1. Place the branch into the hinge bracket **(See Fig. E)**.
2. Insert a new hinge pin all through the holes of bracket, and secure with a washer **(See Fig. E - close up)**.



SPARE PARTS

This tree includes sets of hinge pins & washers. If extra parts are needed, please contact our customer service center.

CREATE YOUR TWINKLY LIGHT SHOW

This tree is equipped with Twinkly RGB LED lights. Simply download the app, and add magic to your tree. For details, please see the **Twinkly Pre-lit Tree Instructions Guide**.

CUSTOMER SERVICE FOR CHRISTMAS TREES

For any questions, assistance, or missing parts, **Do Not Return To Place Of Purchase**. Please contact us at 1-888-919-0070 or visit our website at www.polygroupstore.com. One of our customer service representatives will be happy to assist you.

Tree ID#: _____	Customer Name: _____
Tree UPC#: _____	Address (No P.O. Boxes): _____
Store Purchased: _____	City & State: _____
Specify Problem: _____	Zip Code: _____
_____	Day Phone: _____
_____	Date Purchased: _____

TREE ID# IS LOCATED ON END PANEL OF BOX. TREE ID# IS REQUIRED WHEN REQUESTING REPLACEMENT PARTS.