

2.28 m / 7.5 ft EZ Connect™ Pre-lit Aspen Tree

ITM. / ART. 1455657, 229610, 600664, 587976, 41059

IMPORTANT, RETAIN FOR FUTURE REFERENCE: READ CAREFULLY

For assistance with assembly, parts and customer service, call: 1-888-919-0070, email: warranty@polygroup.com (English, Spanish, French), (US, Canada only) 10:00am-6:00pm, Monday-Friday, Eastern Time, or go to www.polygroupstore.com.

Please note if you are calling outside of USA & Canada, international toll fees may apply.

Customer Service Hotline Hours: Monday – Friday, 8.00am – 4.00pm MST.

TREE ASSEMBLY INSTRUCTIONS

This tree assembles with EZ Connect™ and Simple Shape™ technology, allowing you to set up and light your tree in less than 10 minutes! Carefully follow the instructions below on how to quickly and easily set up your new tree.

1. Before you start to assemble your tree, choose an appropriate location near a wall outlet.

2. Assemble the tree stand on a level surface. (See Fig. A)

Fig. A - Tree Stand Assembly

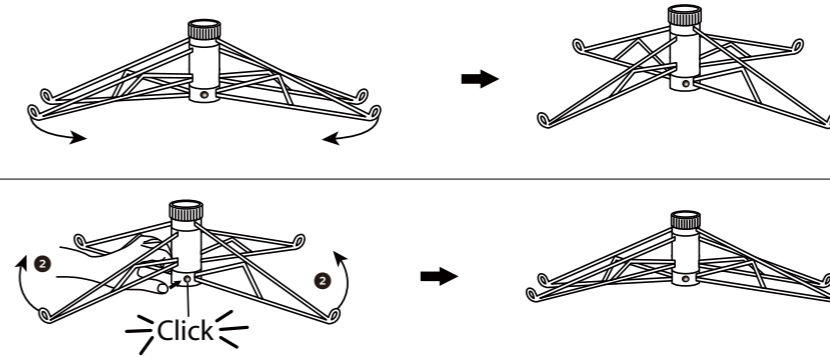
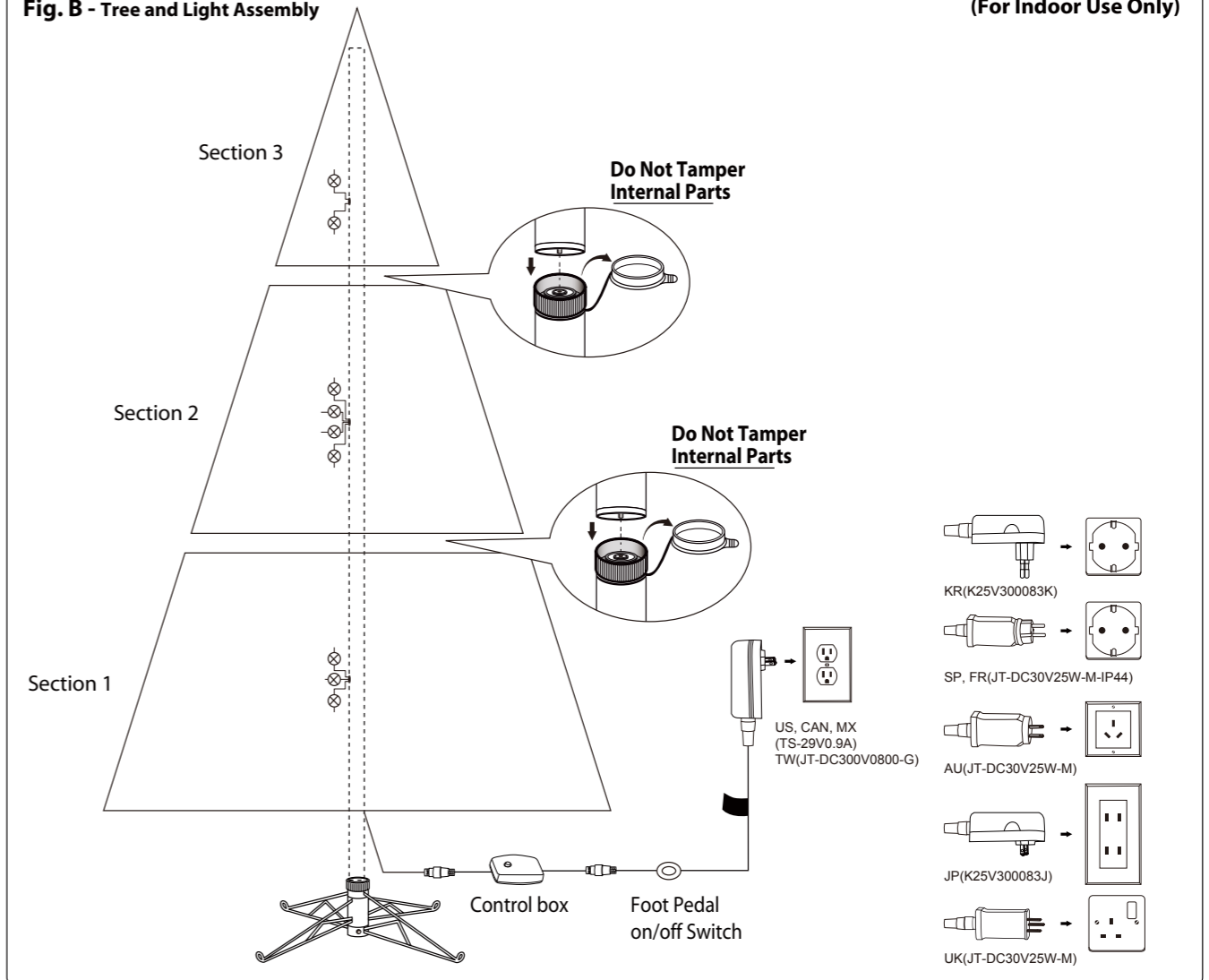
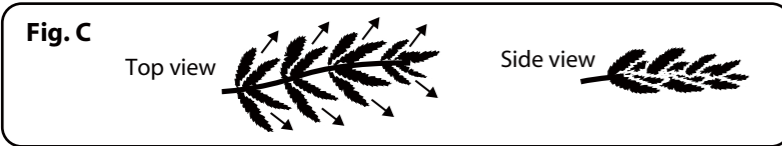


Fig. B - Tree and Light Assembly

(For Indoor Use Only)



- Each tree section is numbered with a label. Please identify all sections before assembling.
- Assemble the tree from the bottom to the top (**See Fig. B**). Start with the bottom section and remove protective cap before inserting into the assembled stand. Make sure the pole is firmly inserted and secured into the stand.
- Open the protective cap from the lower section(s) and continue inserting the upper section(s) until the tree top is inserted.
- Allow branches to fall into place or gently pull up and out. When adjusting branches, be sure that all wires are free of branch hinges.
- Plug the extension cord into a wall outlet (**See Fig. B**), your entire tree should now be lit. If some bulbs do not light or are flickering, search for any loose plugs and/or broken, loose or missing bulbs. Replace the bad bulbs promptly in order to maintain the performance and life expectancy of your pre-lit tree.
- This is a Simple Shape™ tree, just slightly upsweep all branch tips for a uniform look, no shaping required. If needed, shape the branches and tips to make the tree look fuller. Your Christmas tree is now complete and ready to be decorated. (**See Fig. C**)



STORAGE INSTRUCTIONS

- Unplug extension cord from the wall outlet first and then remove all ornaments and decorations.
- Disassemble the tree from the top to the bottom. Start with the tree top and gently lift straight up to remove from section below and fold all branches toward the pole.
- Continue by gently lifting straight up each section(s) from the section below and fold all branches toward the pole until the bottom section is removed from the tree stand. Replace the protective cap on the poles to avoid damaging the internal parts. (**See Fig. D**)
- Carefully place all tree sections into shipping box and tape (not included) it shut.
- When not in use, please store your tree in a cool, dry place away from sunlight. Exposing your tree to excessive heat or humidity may damage your tree.



TROUBLE SHOOTING TIPS

For Pre-lit Trees, If The Tree Does Not Illuminate

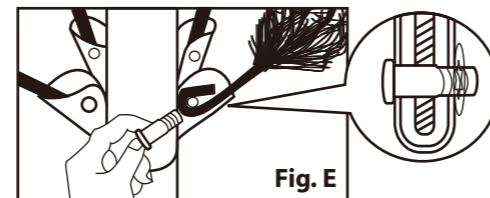
- Please check to make sure that all connectors are properly connected and the power adapter / extension cord is plugged into the wall outlet.
- Turn the poles gently to ensure pole-to-pole connection.
- Check for loose, broken or missing bulbs and replace as needed.
- Check on / off foot pedal.

Loose Hinge Pin

- Extra hinge pins are included for repairing the hinges. Place the branch into the slot of the bracket.
- Insert a new hinge pin through the hole and secure using the retainer washer. (**See Fig. E**)

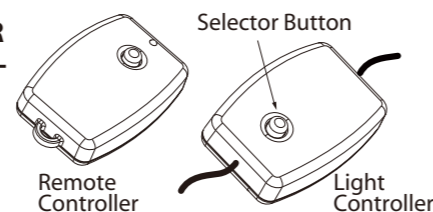
SPARE PARTS

Each tree includes hinge pins/washers and spare bulbs. If extra parts are needed, please contact our customer service center.



HOW TO USE THE DUAL COLOR LIGHT CONTROLLER:

Press the selector button on the "Dual Color Light Controller" to select among: **1. CLEAR STEADY 2. CLEAR FADING 3. MULTI-COLOR STEADY 4. MULTI-COLOR FADING 5. CLEAR / MULTI-COLOR ALTERNATING 6. CLEAR / MULTI-COLOR FADING 7. DEMO**



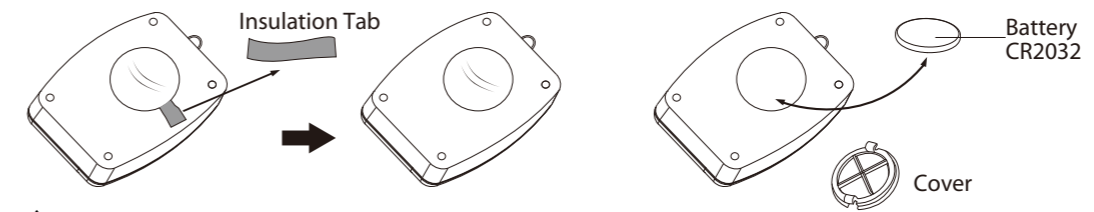
HOW TO USE THE REMOTE CONTROLLER :

The remote control is for the wired controller only:

- REMOVE THE INSULATION TAB OF THE REMOTE CONTROLLER.**
- PRESS THE BUTTON TO SELECT DIFFERENT FUNCTIONS, REFER TO "HOW TO USE THE DUAL COLOR LIGHT CONTROLLER".**
- TO REPLACE THE BATTERY, OPEN THE BATTERY COMPARTMENT WITH A COIN. REPLACE WITH A CR2032 BATTERY.**

(4) DISPOSE USED BATTERY PROPERLY. OBSERVE LOCAL REGULATIONS REGARDING DISPOSAL OF HAZARDOUS WASTE.

(5) ENSURE THE BATTERIES ARE INSTALLED CORRECTLY WITH REGARD TO POLARITY (+ AND -).



! WARNING

1. Use only power adapter supplied with this product, using a different adapter can damage the lights and cause fire or electrical shock hazards.
2. FOR INDOOR USE ONLY.
3. This product contains a button battery(CR2032). If swallowed, it could cause severe injury or death in just 2 hours. Seek medical attention immediately.



4. **! WARNING** - KEEP BATTERIES OUT OF REACH OF CHILDREN
5. Swallowing may lead to serious injury in as little as 2 hours or death, due to chemical burns and potential perforation of the oesophagus.
6. If you suspect your child has swallowed or inserted a button battery, immediately seek urgent medical assistance.
7. Examine devices and make sure the battery compartment is correctly secured, e.g. that the screw or other mechanical fastener is tightened. Do not use if compartment is not secure.
8. Dispose of used button batteries immediately and safely. Flat batteries can still be dangerous.
9. Tell others about the risk associated with button batteries and how to keep their children safe.

AUSTRALIA: Our goods come with guarantees that cannot be excluded under the Australian Consumer Law. You are entitled to a replacement or refund for a major failure and for compensation for any other reasonably foreseeable loss or damage. You are also entitled to have the goods repaired or replaced if the goods fail to be of acceptable quality and the failure does not amount to a major failure.

Distributed by:
Costco Wholesale Corporation
P.O. Box 34535
Seattle, WA 98124-1535
USA
1-800-774-2678
www.costco.com

Importado por:
Importadora Primex S.A. de C.V.
Blvd. Magnocentro No.4
San Fernando La Herradura
Huixquilucan, Estado de México
C.P. 52765
RFC: IPR-930907-S70
(55)-5246-5500
www.costco.com.mx

Importado por:
Costco Wholesale Spain S.L.U.
Polígono Empresarial Los Gavilanes
C/ Agustín de Betancourt,17
28906 Getafe (Madrid) España
NIF : B86509460
900 111 155
www.costco.es

Distribué par :
Costco France
1 avenue de Bréhat
91140 Villebon-sur-Yvette
France
01 80 45 01 10
www.costco.fr

Imported and Distributed by:
Costco Wholesale Korea, Ltd.
40, Iljik-ro
Gwangmyeong-si
Gyeonggi-do, 14347, Korea
1899-9900
www.costco.co.kr

Imported by:
Costco Wholesale Australia Pty Ltd
17-21 Parramatta Road
Lidcombe NSW 2141
Australia
www.costco.com.au

Imported by / Importé par :
Costco Wholesale Canada Ltd.*
415 W. Hunt Club Road
Ottawa, Ontario
K2E 1C5, Canada
1-800-463-3783
www.costco.ca
* faisant affaire au Québec sous le nom Les Entrepôts Costco

Imported by:
Costco Wholesale UK Ltd /
Costco Online UK Ltd
Hartspring Lane
Watford, Herts
WD25 8JS
United Kingdom
01923 213113
www.costco.co.uk

Distributed by:
Costco Wholesale Iceland ehf.
Kauptún 3-7, 210 Gardabaer
Iceland
www.costco.is

Imported by:
Costco Wholesale Japan Ltd.
3-1-4 Ikegami-Shincho
Kawasaki-ku, Kawasaki-shi,
Kanagawa 210-0832 Japan
044-281-2600
www.costco.co.jp

Imported by / Manufactured for:
Costco President Taiwan, Inc.
No. 656 Chung-Hwa 5th Road
Kaohsiung, Taiwan
Company Tax ID: 96972798
0800-885-889
www.costco.com.tw

MADE IN CHINA / FABRIQUÉ EN CHINE / HECHO EN CHINA

FCC Verification User Manual

- This device complies with Part 15 of the FCC Rules. Operation is subject to the following two conditions: (1) this device may not cause harmful interference, and (2) this device must accept any interference received, including interference that may cause undesired operation.
- "Warning: Changes or modifications to this unit not expressly approved by the party responsible for compliance could void the user's authority to operate the equipment."
- "NOTE: This equipment has been tested and found to comply with the limits for a Class B digital device, pursuant to Part 15 of the FCC Rules. These limits are designed to provide reasonable protection against harmful interference in a residential installation. This equipment generates, uses and can radiate radio frequency energy and, if not installed and used in accordance with the instructions, may cause harmful interference to radio communications.

However, there is no guarantee that interference will not occur in a particular installation. If this equipment does cause harmful interference to radio or television reception, which can be determined by turning the equipment off and on, the user is encouraged to try to correct the interference by one or more of the following measures:

- Reorient or relocate the receiving antenna.
- Increase the separation between the equipment and receiver.
- Connect the equipment into an outlet on a circuit different from that to which the receiver is connected.
- Consult the dealer or an experienced radio/TV technician for help.

Canadian Emissions Requirements

- The Canadian Government has announced an amendment of the radio act which will require computing equipment to comply with EMI specifications in Canada. The effective date for products imported into Canada is January 31, 1989.
- The intent of the amendment is to establish Canadian Regulations which are harmonized with the existing FCC Regulations. As such, no retesting is required and devices which have been tested and comply with the FCC Specifications (Class B) also comply with the Canadian Specification (Class B).
- There is however, an additional equipment label requirement. Units imported into Canada must be accompanied by a label affixed to the device in both English and French.
"This Class B digital apparatus complies with Canadian ICES-003."
"Cet appareil numérique de la classe B est conforme à la norme NMB-003 du Canada."

"This Class B digital apparatus complies with Canadian ICES-003."
"Cet appareil numérique de la classe B est conforme à la norme NMB-003 du Canada."

CUSTOMER SERVICE FOR CHRISTMAS TREES

For any questions, assistance, or missing parts, **DO NOT RETURN YOUR TREE TO PLACE OF PURCHASE.** please contact us first, call: 1-888-919-0070, email: warranty@polygroup.com (English, Spanish, French), (US and Canada only) 10:00am-6:00pm, Monday-Friday, Eastern Time, or visit our website at www.polygroupstore.com.

Tree ID#: _____ Customer Name: _____
Tree UPC#: _____ Address:(No P.O. Boxes) _____
Store Purchased: _____ City & State: _____
Specify Problem: _____ Zip Code: _____
_____ Day Phone: _____
_____ Date Purchased: _____

TREE ID# IS LOCATED ON END PANEL OF BOX. TREE ID# IS REQUIRED WHEN REQUESTING REPLACEMENT PARTS.