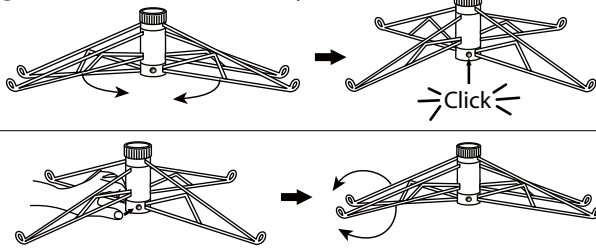


TREE ASSEMBLY INSTRUCTIONS

Congratulations on purchasing your new tree from **Polygroup®**! This tree features Quick Set® and Quick Fold™ and Simple Shape technology to make set up and storage quick and easy. Carefully follow the instructions below on how to quickly and easily set up your new tree.

1. Before you start to assemble your tree, choose an appropriate location near a wall outlet.
2. Assemble the tree stand and place on a level surface. (See Fig. A)

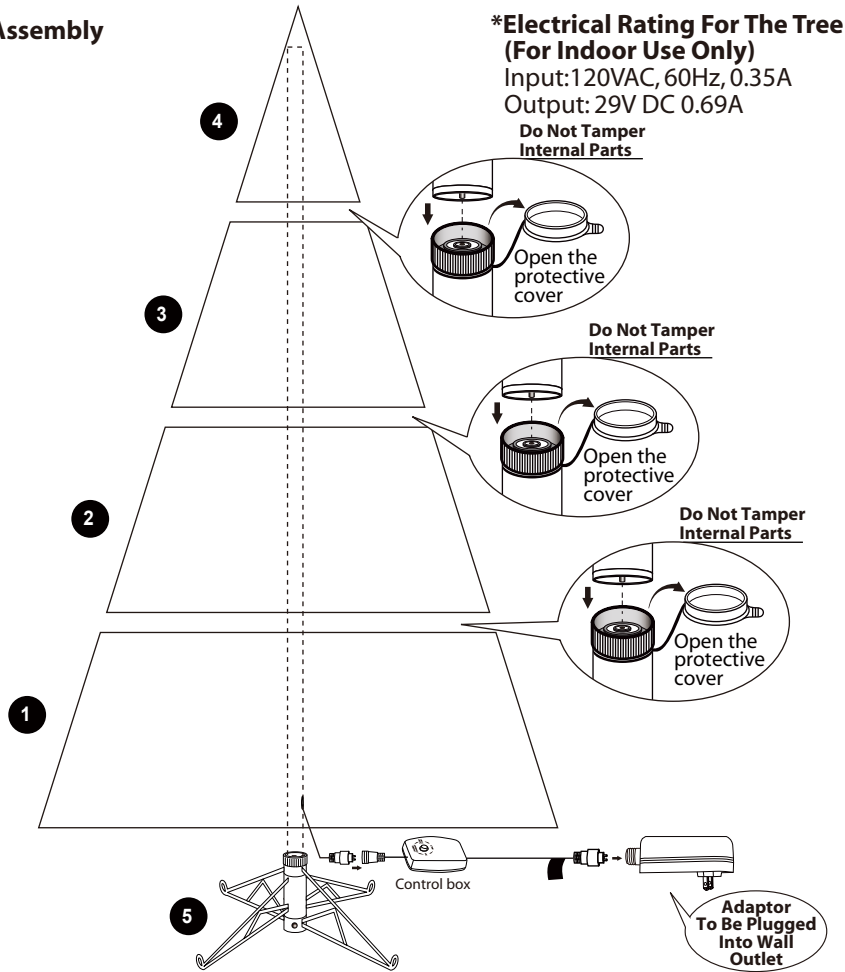
Fig. A - Tree Stand Assembly



Pull apart the legs of the stand so that they are snapped into an x-shape, place the tree stand on a level surface.

To close the stand, press the metal button and fold the legs together.

Fig. B - Tree and Light Assembly



***Electrical Rating For The Tree (For Indoor Use Only)**

Input: 120VAC, 60Hz, 0.35A

Output: 29V DC 0.69A

Do Not Tamper Internal Parts

Do Not Tamper Internal Parts

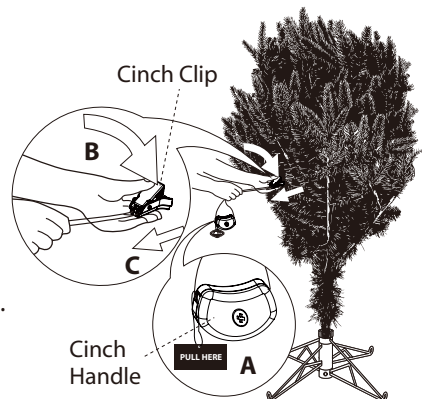
Do Not Tamper Internal Parts

Adaptor To Be Plugged Into Wall Outlet

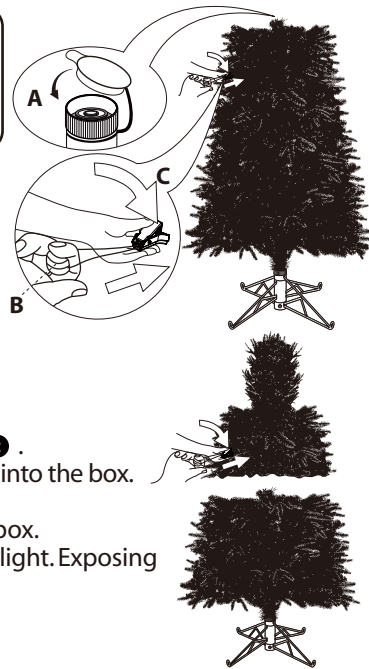
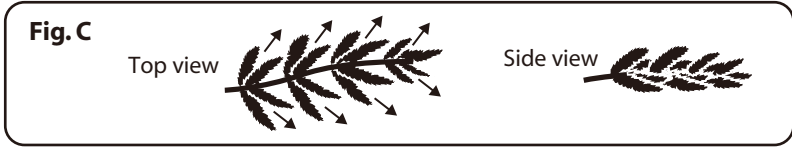
3. Each tree section is numbered with a tag. Please identify all sections before assembling.
4. Assemble the tree from bottom to tree top. Start with the bottom section and remove the protective cap before inserting into the assembled stand. Make sure the pole is firmly inserted and secured into the stand.

5. SET UP

- Remove tree stand and tree sections from box.
 - Insert tree bottom section 1 into the tree stand 5.
 - A. Locate "Pull Here" tab and corresponding Cinch Handle
 - B. Hold Cinch Clip firmly with one hand and press down on clip
 - C. With Cinch Clip depressed, pull clip away from tree until all branches are released
 - D. Locate all clips on the same tree section then repeat above procedures to release the corresponding branches.
 - Remove the protective cap from tree bottom section 1 and insert tree middle section 1 2.
 - Release all branches using the same procedures described in step 3.
 - Add tree middle section 2 3 and tree top 4 using the same procedures described in steps 4 and 5.
6. Allow branches to fall into place or gently pull up and out. When adjusting branches, be sure that all wires are free of branch hinges.
 7. Just plug the adaptor (connecting with the tree power cord) into the wall outlet (See Fig. B), your entire tree should now be lit. If some bulbs do not light or flickers, search for any loose plugs and/or broken, loose or missing bulbs. Replace bulbs promptly in order to maintain the performance and life expectancy of your pre-lit tree.



8. This tree is constructed with Quick Set® and Simple Shape technology. Shaping is not necessary; you just need to slightly upsweep all branch tips for a uniform look (see Fig.C) and shift branches to fill any gaps. Your Christmas tree is now ready to be decorated.



STORAGE INSTRUCTIONS

- Unplug extension cord from the wall outlet first and then remove all ornaments and decorations.
 - Detach Tree Top ④ and store it in box.
 - A. Cover the protective cap of the Tree Middle Section 2 ③ .
 - B. Hold Cinch Handle with right hand.
 - C. Hold Cinch Clip firmly with left hand and press down on clip. Pull handle toward you while pushing away cinch clip until the upper branches of Tree Middle Section 2 ③ are folded completely.
 - Repeat the procedures described in step 2 for tree middle section 1 ② .
 - Detach Tree Middle Section 1 ② , Tree Middle Section 2 ③ and put them into the box.
 - Cover the protective cap of Tree Bottom Section, then fold.
 - Detach Tree Bottom Section from tree stand and pack them into the box.
- When not in use, please store your tree in a cool, dry place away from sunlight. Exposing your tree to excessive heat or humidity may damage your tree.

TROUBLE SHOOTING TIPS

For Pre-lit Trees, If The Tree Does Not Illuminate

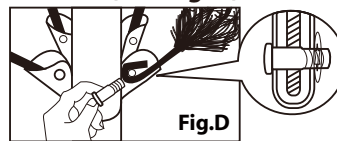
- Please check to make sure that all plugs are properly connected and power cord is plugged into the wall outlet. (If the tree comes with a foot pedal, try stepping on the on/off button).
- Turning the poles gently to make sure pole to pole are connected into place.
- Check for loose connection between light string plugs and extension cords.
- Please check for loose, broken or missing light bulbs and replace as needed.

Loose Hinge Pin

- Extra hinge pins are included for repairing the hinges. Place the branch into the slot of the bracket.
- Insert a new hinge pin through the hole and secure using the retainer washer. (See Fig. D)

SPARE PARTS

Each tree includes hinge pins/washers, and for pre-lit trees spare bulbs and fuses are also included. If extra parts are needed, please contact our customer service center.

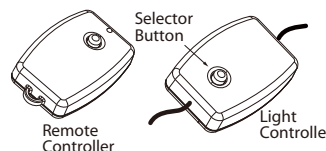


HOW TO USE THE DUAL COLOR LIGHT CONTROLLER AND REMOTE CONTROL:

Press the selector button on the "Dual Color Light Controller" or "Remote Controller" to select among:

- (1) CLEAR-MULTI FADING; (2) CLEAR-MULTI FLASHING; (3) CLEAR-MULTI ALTERNATING; (4) STEADY CLEAR; (5) FLASHING CLEAR; (6) STEADY MULTI; (7) FLASHING MULTI; (8) COMBINATION.

For the remote controller, replace only with CR2032 battery. See bottom of the remote controller for replacement instruction.



⚠️ WARNING

- Use only power adaptor supplied with this product, using a different adaptor will damage the lights. and cause fire, electrical shock hazards.
- FOR INDOOR USE ONLY.

CUSTOMER SERVICE FOR CHRISTMAS TREES

For any questions, assistance, or missing parts, **Do Not Return To Place Of Purchase.** Please contact us at 1-888-919-0070 or visit our website at www.polygroup.com. One of our customer service representatives will be happy to assist you.

Tree ID#: _____	Customer Name: _____
Tree UPC#: _____	Address:(No P.O. Boxes) _____
Store Purchased: _____	City & State: _____
Specify Problem: _____	Zip Code: _____
_____	Day Phone: _____
_____	Date Purchased: _____

TREE ID# IS LOCATED ON END PANEL OF BOX. TREE ID# IS REQUIRED WHEN REQUESTING REPLACEMENT PARTS.