

There's no time like the holidays for celebrating festive traditions and creating new ones. Since 2003, Tara McConnell has been giving families plenty to celebrate with her temp-tations® by Tara presentable ovenware, décor and holiday home accents. Every temp-tations® piece is designed by Tara to make life easier and more beautiful... during the holidays and every day. We hope this stylish and versatile temp-tations® Christmas tree becomes a cherished part of your holiday traditions for years to come!

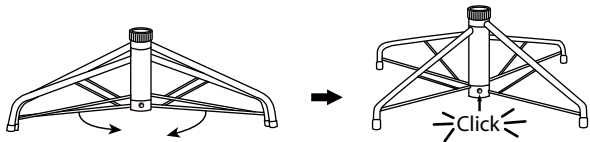
TREE ASSEMBLY INSTRUCTIONS

Congratulations on purchasing your new tree from **Polytree®!** This tree comes with Quick Set® technology-Set up and light up your tree in less than 10 minutes!

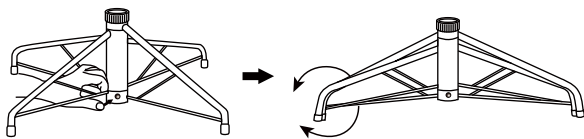
Carefully follow the instructions below on how to quickly and easily set up your new tree.

1. Before you start to assemble your tree, choose an appropriate location near a wall outlet.
2. Taking all components out of the box and staging the pieces in an area where glitter can be cleaned up.
3. Assemble the tree stand and place on a level surface. **(See Fig. A)**

Fig. A - Tree Stand Assembly

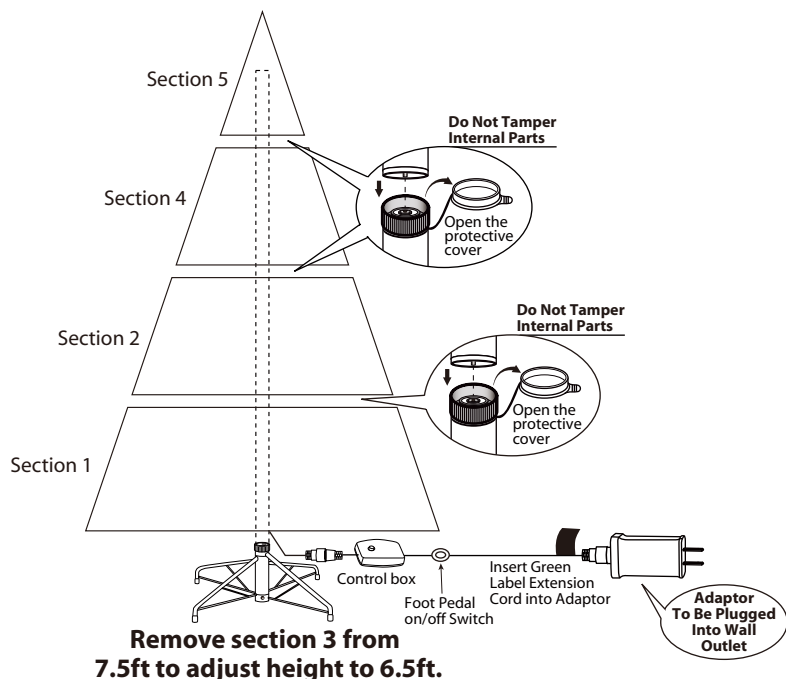
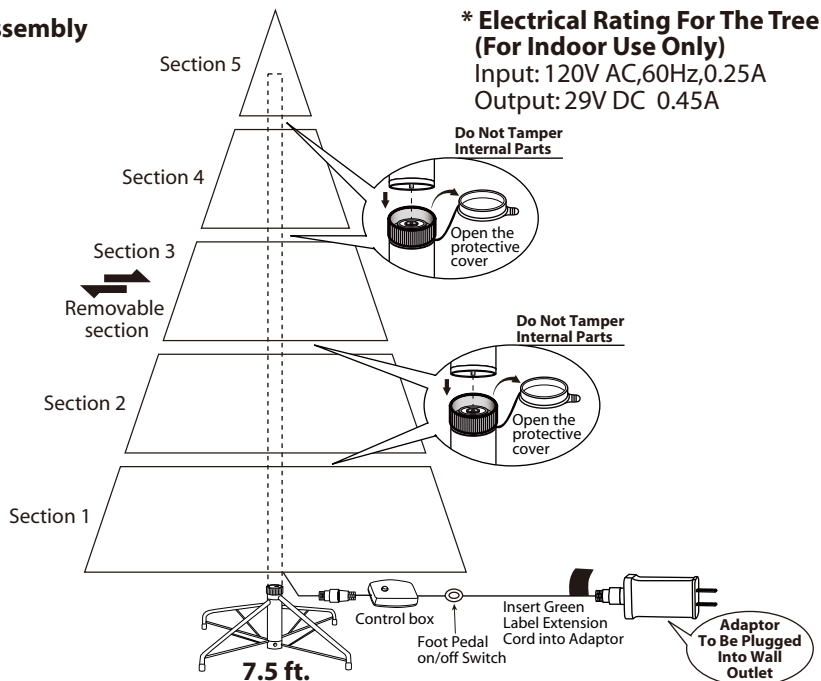


Pull apart the legs of the stand so that they are snapped into an x-shape, place the tree stand on a level surface.



To close the stand, press the metal button and fold the legs together.

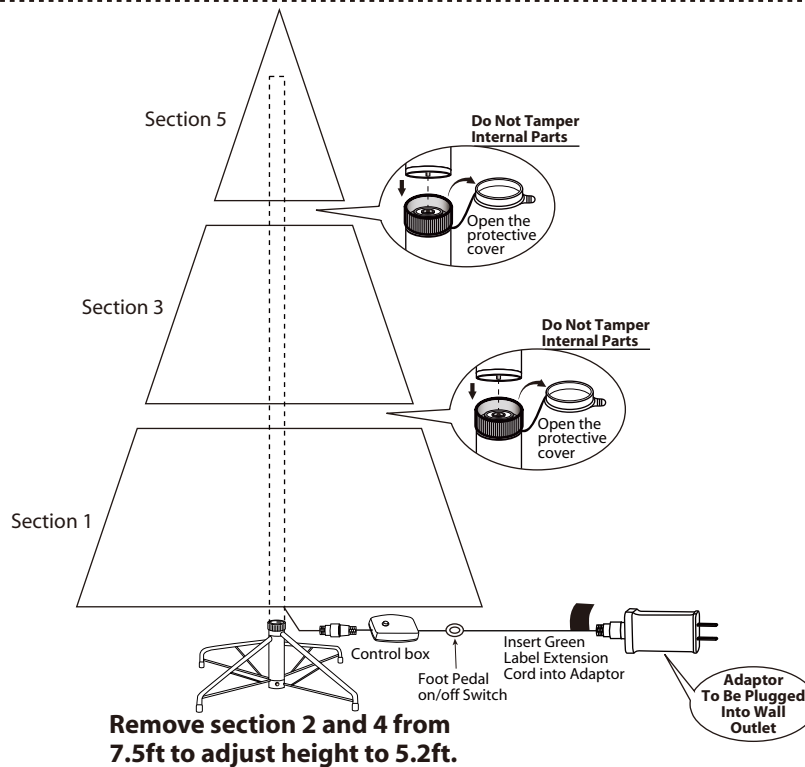
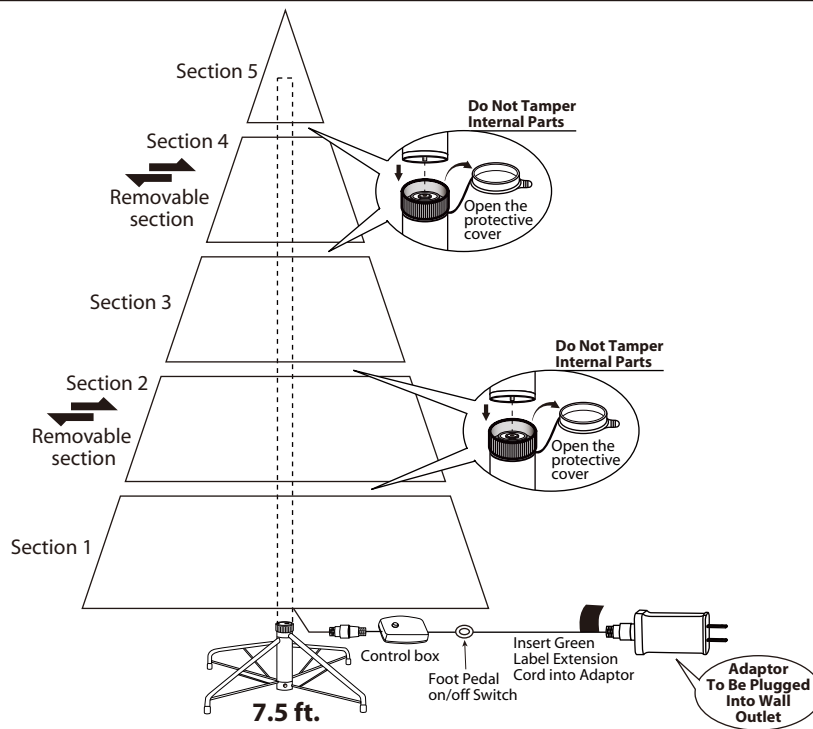
Fig. B - Tree and Light Assembly



temp-tations®
 by Tara

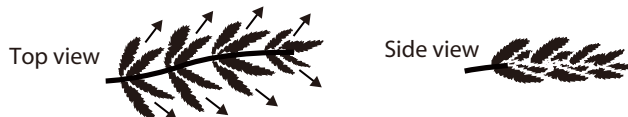
ASSEMBLY INSTRUCTIONS

MADE IN CHINA



4. Each tree section is numbered with a tag. Please identify all sections before assembling.
5. Assemble the tree from bottom to tree top. Start with the bottom section and remove the protective cap before inserting into the assembled stand. Make sure the pole is firmly inserted and secured into the stand.
6. Continue by inserting the upper tree section(s) to the lower section(s) until inserting the tree top.
7. Allow branches to fall into place or gently pull up and out. When adjusting branches, be sure that all wires are free of branch hinges.
8. Insert green label plug into the wall outlet. (See Fig. B), your entire tree should now be lit. If some bulbs do not light or flickers, search for any loose plugs and/or broken, loose or missing bulbs. Connecting the plugs or replace the bad bulbs promptly in order to maintain the performance and life expectancy of your pre-lit tree.
9. Begin to shape the branches and tips working from the bottom to the top. Start with tips farthest from the pole and fan out one to the right, one to the left and one at the center of the main stem. (See Fig. C)

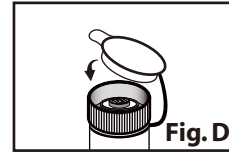
Fig. C



10. After shaping the entire tree following the previous step, slightly upsweep all branch tips for a uniform look. Shift branches to fill any gaps. Your Christmas tree is now complete and ready to be decorated.

STORAGE INSTRUCTIONS

1. Unplug extension cord from the wall outlet first and then remove all ornaments and decorations.
2. Disassemble the tree from the top to the bottom. Start with the tree top and gently lift straight up to remove from section below and fold all branches toward the pole.
3. Continue by gently lifting straight up each section(s) from the section below and fold all branches toward the pole until the bottom section is removed from the tree stand. Cover the cap on the poles to avoid damaging the internal parts. **(See Fig. D)**
4. Carefully place all tree sections into shipping box and tape it shut.
5. When not in use, please store your tree in a cool, dry place away from sunlight. Exposing your tree to excessive heat or humidity may damage your tree.



TROUBLE SHOOTING TIPS

For Pre-lit Trees, If The Tree Does Not Illuminate

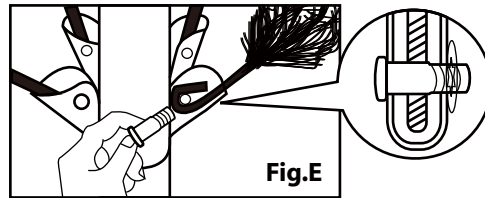
1. Please check to make sure that all plugs are properly connected and power cord is plugged into the wall outlet. (If the tree comes with a foot pedal, try stepping on the on/off button).
2. Turning the poles gently to make sure pole to pole are connected into place.
3. Check for loose connection between light string plugs and extension cords.
4. Please check for loose, broken or missing light bulbs and replace as needed.

Loose Hinge Pin

1. Extra hinge pins are included for repairing the hinges. Place the branch into the slot of the bracket.
2. Insert a new hinge pin through the hole and secure using the retainer washer. **(See Fig. E)**

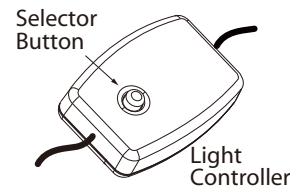
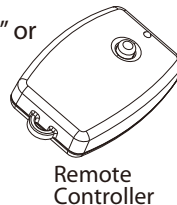
SPARE PARTS

Each tree includes hinge pins/washers, and for pre-lit trees spare bulbs are also included. If extra parts are needed, please contact our customer service center.



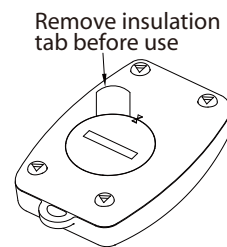
HOW TO USE THE DUAL COLOR LIGHT CONTROLLER AND REMOTE CONTROL:

Press the selector button on the "Dual Color Light Controller" or "Remote Controller" to select among: **(1) CLEAR AND MULTI-COLOR ALTERNATING; (2) CLEAR LIGHTS; (3) MULTI LIGHTS and (4) TURN OFF BOTH LIGHTS.**



Battery Replacement:

1. This product uses one CR-2032 battery.
2. Turn cover counterclockwise on the battery compartment to open.
3. Remove the battery.
4. Clean the battery contacts and also those of the device prior to battery installation.
5. Install a new battery following the polarity shown on the battery box.
6. Replace the battery in the battery compartment box, and turn the cover clockwise.



WARNING:

1. **CAUTION** - Replace only with CR-2032 type battery.
2. Do not expose light set to moisture.
3. Remove batteries when not used for an extended period of time, or when depleted.
4. Do not use rechargeable batteries.
5. Dispose of batteries properly by following directions on batteries.
6. Clean the battery contacts and also those of the device prior to battery installation
7. **WARNING:** Small parts, keep away from children.

⚠ WARNING

1. Use only power adaptor supplied with this product, using a different adaptor will damage the lights. and cause fire, electrical shock hazards.
2. **FOR INDOOR USE ONLY.**



ASSEMBLY INSTRUCTIONS

MADE IN CHINA

CUSTOMER SERVICE FOR CHRISTMAS TREES

For any questions, assistance, or missing parts, **Do Not Return To Place Of Purchase.** Please contact us at 800-442-8677 or visit our website at www.polygroup.com. One of our customer service representatives will be happy to assist you.

Tree ID#: _____ Customer Name: _____

Tree UPC#: _____ Address:(No P.O. Boxes) _____

Store Purchased: _____ City & State: _____

Specify Problem: _____ Zip Code: _____

_____ Day Phone: _____

_____ Date Purchased: _____

TREE ID# IS LOCATED ON END PANEL OF BOX. TREE ID# IS REQUIRED WHEN REQUESTING REPLACEMENT PARTS.