

HIGH PARK BALSAM FIR TREE

model no. 151-4419-2 | Toll-free number: 1.866.827.4985

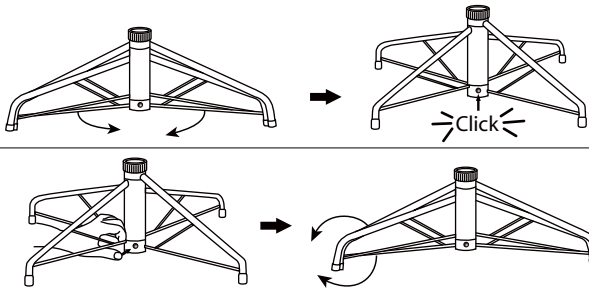
IMPORTANT: Please read this manual carefully before assembly and save it for reference

TREE ASSEMBLY INSTRUCTIONS

Carefully follow the instructions below to quickly and easily set up your new tree.

1. Before you start to assemble your tree, choose an appropriate location near a wall outlet.
2. Assemble the tree stand and place on a level surface. **(See Fig. A.)**

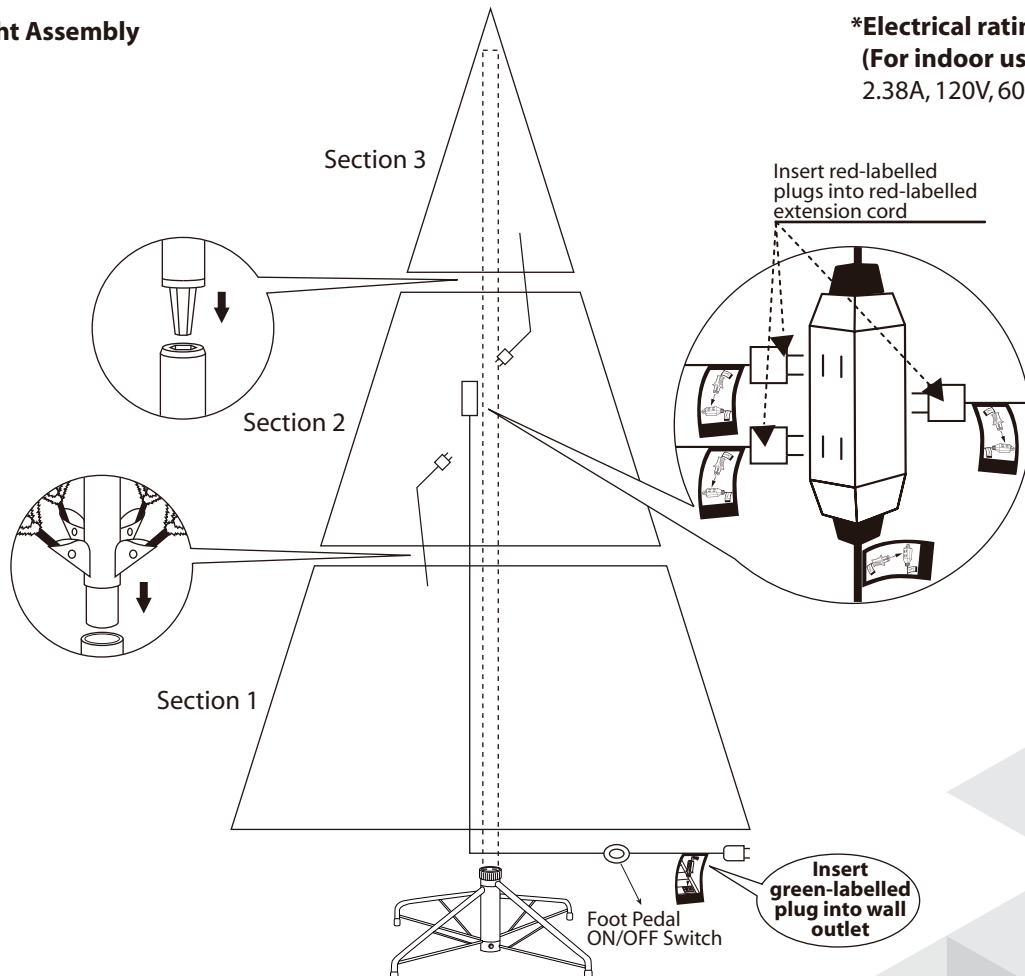
Fig. A - Tree Stand Assembly



Pull apart the legs of the stand so that they are snapped into an X-shape, and place the tree stand on a level surface.

To close the stand, press the metal button and fold the legs together.

Fig. B - Tree and Light Assembly



***Electrical rating for the tree**
(For indoor use only)
 2.38A, 120V, 60Hz

Insert red-labelled
 plugs into red-labelled
 extension cord

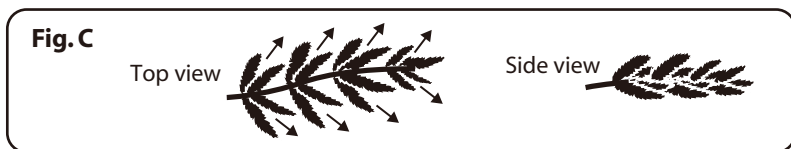
Insert
 green-labelled
 plug into wall
 outlet

Foot Pedal
 ON/OFF Switch

3. Each tree section is numbered with a tag. Please identify all sections before assembling.

4. Assemble the tree from the bottom to the top. Start with the bottom section and remove protective cap before inserting into the assembled stand. Make sure the pole is firmly inserted and secured into the stand.

5. Continue by inserting the upper tree section(s) to the lower section(s) until inserting the tree top.
6. Allow branches to fall into place or gently pull up and out. When adjusting branches, be sure that all wires are free of branch hinges.
7. (For pre-lit trees only.) Connect the plug(s) securely to the extension cord(s) as per the colour labels indicated in **Fig. B** and insert the green-labelled extension cord plug into the wall outlet. Your entire tree should now be lit. If some bulbs do not light or flicker, search for any loose plugs and/or broken, loose or missing bulbs. Replace bulbs promptly in order to maintain the performance and life expectancy of your pre-lit tree.
8. Begin to shape the branches and tips, working from the bottom to the top. Start with tips farthest from the pole and fan out one to the right, one to the left and one at the centre of the main stem. **(See Fig. C.)**



9. After shaping the entire tree following the previous step, slightly upswEEP all branch tips for a uniform look. Shift branches to fill any gaps. Your Christmas tree is now complete and ready to be decorated.

STORAGE INSTRUCTIONS

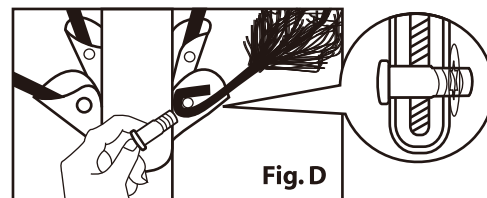
1. Remove all ornaments and decorations. For pre-lit trees, first unplug extension cord from the wall outlet and then disconnect light extension cord between each section of the tree.
2. Disassemble the tree from the top to the bottom. Start with the tree top; gently lift straight up to remove from section below, and fold all branches toward the pole.
3. In case of difficulty separating the tree pole (trunk), apply a small amount of lubricant at the joint and rotate the upper pole in both directions. Lift up the upper pole again.
4. Continue by gently lifting straight up each section from the section below and folding all branches toward the pole until the bottom section is removed from the tree stand.
5. Carefully place all tree sections into shipping box and tape it shut.
6. When not in use, please store your tree in a cool, dry place away from sunlight. Exposing your tree to excessive heat or humidity may damage your tree.

For pre-lit trees, if the tree does not illuminate

1. Please check to make sure that all plugs are properly connected according to the colour labels indicated in **Fig. B** and that the power cord is plugged into the wall outlet. Refer to assembly guide for instructions. (If the tree comes with a foot pedal, try stepping on the ON/OFF button.)
2. Please check for loose, broken or missing light bulbs and replace as needed.

Loose Hinge Pin

1. Extra hinge pins are included for repairing the hinges. Place the branch into the slot of the bracket.
2. Insert a new hinge pin through the hole and secure using the retainer washer. **(See Fig. D)**



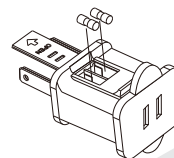
This product carries a one (1) year warranty against defects in workmanship and materials. Noma Canada agrees to replace a defective product, within the stated warranty period, when returned to the place of purchase with proof of purchase. This product is not guaranteed against wear or breakage due to misuse and/or abuse.

Replace the fuse.

- Grasp plug and remove from the receptacle or other outlet device. Do not unplug by pulling on the cord.
- Open fuse cover. Slide open fuse access cover on top of attachment plug toward blades.
- Remove fuse carefully.
- Risk of fire. Replace fuse with only a 3 Amp, 125 volt fuse (provided with product).
- Close fuse cover. Slide close the fuse access cover on top of attachment plug.

CAUTION: Risk of fire. Do not replace attachment plug.

Do not remove the safety device (fuse). Discard product if the attachment plug is damaged.



SPARE PARTS

Each tree includes hinge pins/washers, and for pre-lit trees, spare bulbs and fuses are also included. If extra parts are needed, please contact our customer service centre.

Made in China

Imported by

Noma Canada, Toronto, Canada M4S 2B8

DATE CODE / DATE DE CODE: 32416