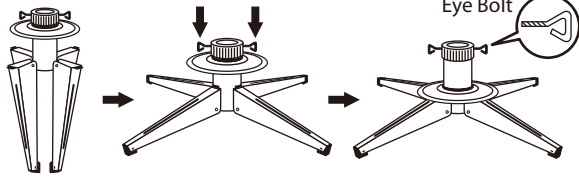


TREE ASSEMBLY INSTRUCTIONS

Congratulations on purchasing your new tree from **Polytree®**! This tree comes with Quick Set® technology-Set up and light up your tree in less than 10 minutes! Carefully follow the instructions below on how to quickly and easily set up your new tree.

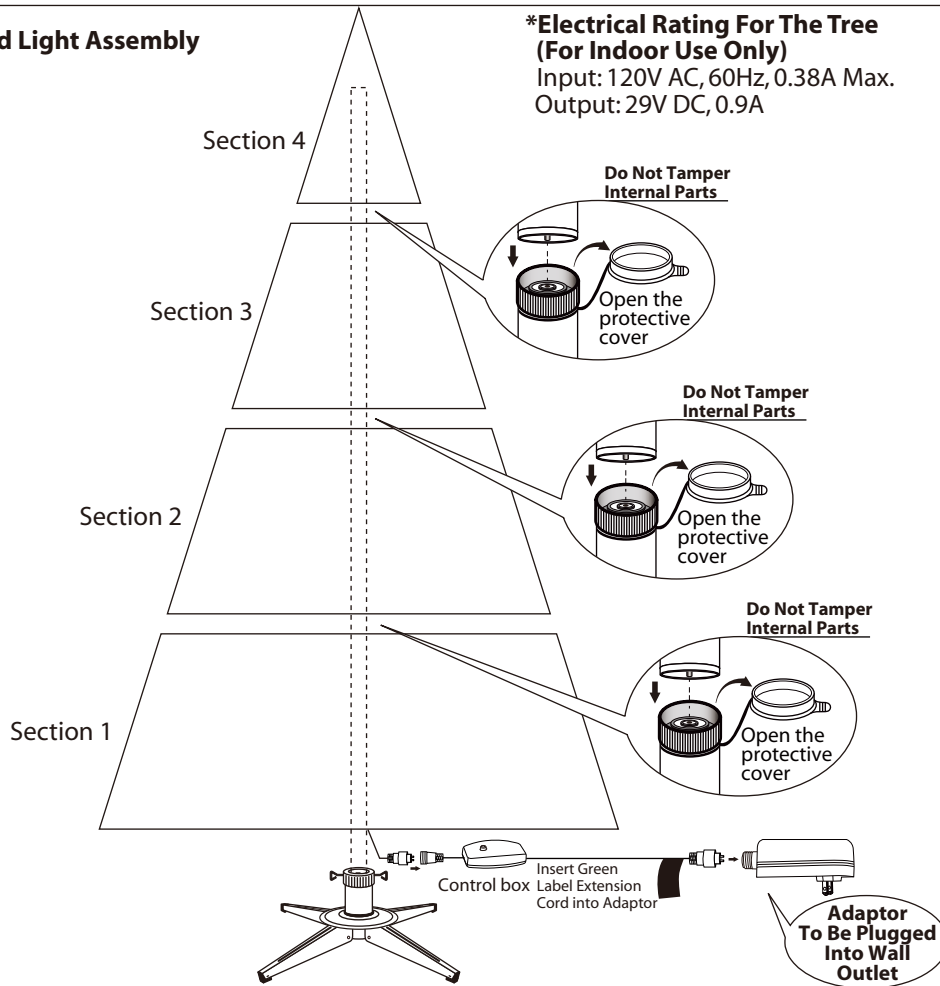
1. Before you start to assemble your tree, choose an appropriate location near a wall outlet.
2. Assemble the tree stand and place on a level surface. (See Fig. A)

Fig. A - Tree Stand Assembly



1. Unfold the legs and lay the stand in a flat area. Then slide the locking disc downward and snap into place.
2. When inserting the bottom section of the tree into the assembled stand, thread the eyebolt into the stand and tighten until the pole is firmly secured.

Fig. B - Tree and Light Assembly



***Electrical Rating For The Tree (For Indoor Use Only)**
 Input: 120V AC, 60Hz, 0.38A Max.
 Output: 29V DC, 0.9A

3. Each tree section is numbered with a tag. Please identify all sections before assembling.
4. Assemble the tree from bottom to tree top. Start with the bottom section and remove the protective cap before inserting into the assembled stand. Make sure the pole is firmly inserted and secured into the stand.
5. Continue by inserting the upper tree section(s) to the lower section(s) until inserting the tree top.
6. Allow branches to fall into place or gently pull up and out. When adjusting branches, be sure that all wires are free of branch hinges.
7. Your entire tree should now be lit. If some bulbs do not light or flickers, search for any loose plugs and/or broken, loose or missing bulbs. Connecting the plugs or replace the bad bulbs promptly in order to maintain the performance and life expectancy of your pre-lit tree.
8. Begin to shape the branches and tips working from the bottom to the top. Start with tips farthest from the pole and fan out one to the right, one to the left and one at the center of the main stem. (See Fig. C)

Fig. C

Top view



Side view

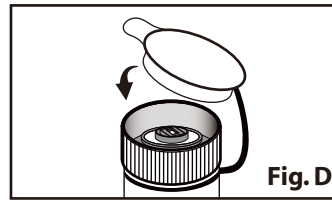


9. After shaping the entire tree following the previous step, slightly upswEEP all branch tips for a uniform look. Shift branches to fill any gaps. Your Christmas tree is now complete and ready to be decorated.

MODEL #: TG90P4223D00

STORAGE INSTRUCTIONS

1. Unplug adaptor from the wall outlet first and then remove all ornaments and decorations.
2. Disassemble the tree from the top to the bottom. Start with the tree top and gently lift straight up to remove from section below and fold all branches toward the pole.
3. Continue by gently lifting straight up each section(s) from the section below and fold all branches toward the pole until the bottom section is removed from the tree stand. Cover the protective cap on the poles to avoid damaging the internal parts. **(See Fig. D)**
4. Carefully place all tree sections into shipping box and tape it shut.
5. When not in use, please store your tree in a cool, dry place away from sunlight. Exposing your tree to excessive heat or humidity may damage your tree.



TROUBLE SHOOTING TIPS

For Pre-lit Trees, If The Tree Does Not Illuminate

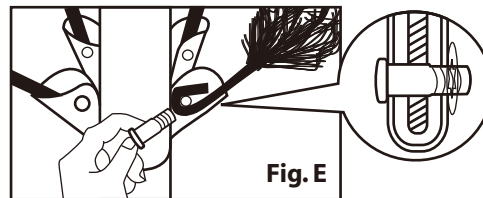
1. Please check to make sure that all plugs are properly connected and adaptor is plugged into the wall outlet. (If the tree comes with a foot pedal, try stepping on the on/off button).
2. Turning the poles gently to make sure pole to pole are connected into place.
3. Check for loose connection between light string plugs and extension cords.
4. Please check for loose, broken or missing light bulbs and replace as needed.

Loose Hinge Pin

1. Extra hinge pins are included for repairing the hinges. Place the branch into the slot of the bracket.
2. Insert a new hinge pin through the hole and secure using the retainer washer. **(See Fig. E)**

SPARE PARTS

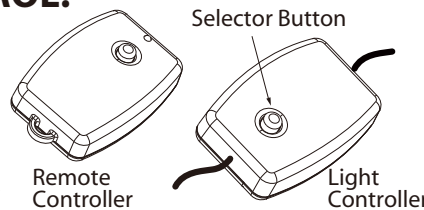
Each tree includes hinge pins/washers, and for pre-lit trees spare bulbs are also included. If extra parts are needed, please contact our customer service center.



HOW TO USE THE DUAL COLOR LIGHT CONTROLLER AND REMOTE CONTROL:

Press the selector button on the "Dual Color Light Controller" or "Remote Controller" to select among: **(1) CLEAR-MULTI FADING;** **(2) CLEAR-MULTI FLASHING;** **(3) CLEAR-MULTI ALTERNATING;** **(4) STEADY CLEAR;** **(5) FLASHING CLEAR;** **(6) STEADY MULTI;** **(7) FLASHING MULTI;** **(8) COMBINATION.**

Note: For the remote controller, replace only with CR2032 battery. See bottom of the remote controller for replacement instruction.



⚠️ WARNING

1. Use only power adaptor supplied with this product, using a different adaptor will damage the lights. and cause fire, electrical shock hazards.
2. FOR INDOOR USE ONLY.

CUSTOMER SERVICE FOR CHRISTMAS TREES

For any questions, assistance, or missing parts, **Do Not Return To Place Of Purchase.** Please contact us at 1-888-919-0070 or visit our website at www.polygroup.com. One of our customer service representatives will be happy to assist you.

| | |
|------------------------|-------------------------------|
| Tree ID#: _____ | Customer Name: _____ |
| Tree UPC#: _____ | Address:(No P.O. Boxes) _____ |
| Store Purchased: _____ | City & State: _____ |
| Specify Problem: _____ | Zip Code: _____ |
| _____ | Day Phone: _____ |
| _____ | Date Purchased: _____ |

TREE ID# IS LOCATED ON END PANEL OF BOX. TREE ID# IS REQUIRED WHEN REQUESTING REPLACEMENT PARTS.