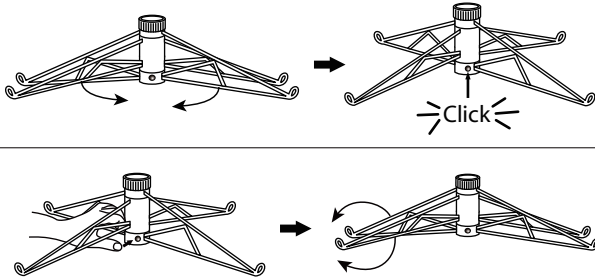


TREE ASSEMBLY INSTRUCTIONS

Congratulations on purchasing your new tree from **Polytree!** This tree comes with Quick Set and Simple Shape technology-Set up and light up your tree in less than 10 minutes! Carefully follow the instructions below on how to quickly and easily set up your new tree.

1. Before you start to assemble your tree, choose an appropriate location near a wall outlet.
2. Assemble the tree stand and place on a level surface. (See Fig. A)

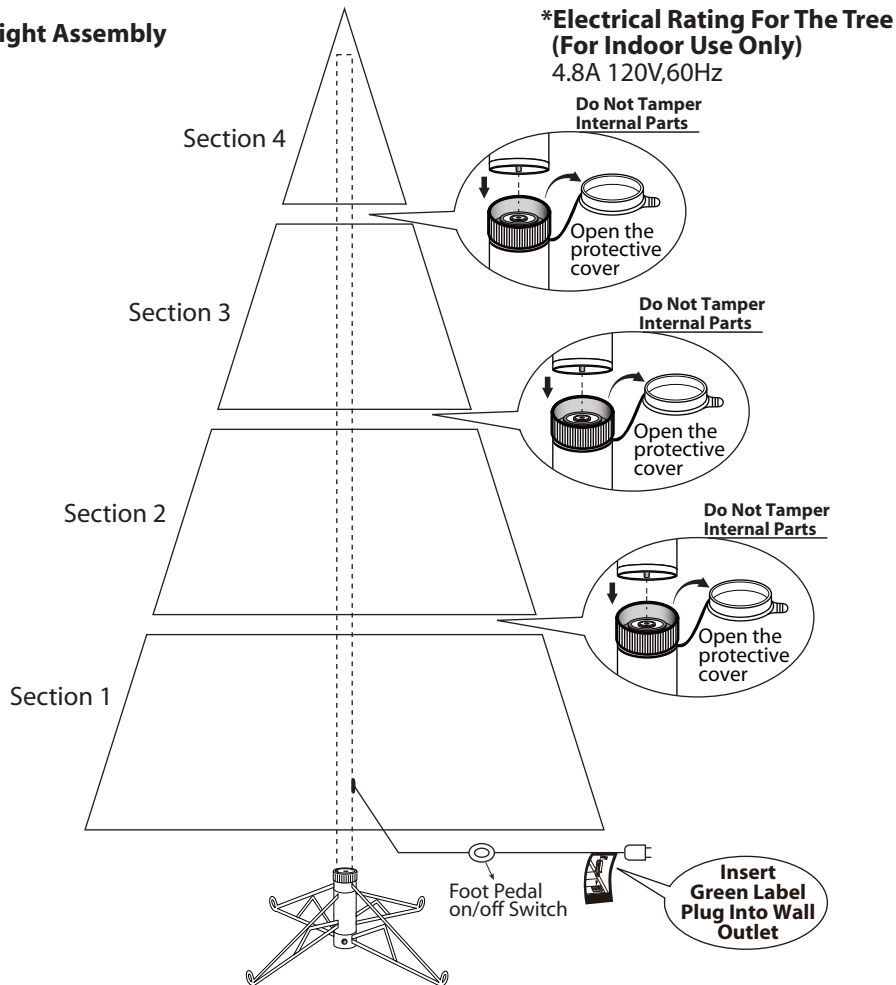
Fig. A - Tree Stand Assembly



Pull apart the legs of the stand so that they are snapped into an x-shape, place the tree stand on a level surface.

To close the stand, press the metal button and fold the legs together.

Fig. B - Tree and Light Assembly



3. Each tree section is numbered with a tag. Please identify all sections before assembling.
4. Assemble the tree from bottom to tree top. Start with the bottom section and remove the protective cap before inserting into the assembled stand. Make sure the pole is firmly inserted and secured into the stand.
5. Plug the adaptor into the wall outlet (see Fig. B), continue by inserting the upper tree section(s) to the lower section(s) until inserting the tree top. Allow branches to fall into place or gently pull up and out. When adjusting branches, be sure that all wires are free of branch hinges.
6. Your entire tree should now be lit. If some bulbs do not light or flickers, search for any loose plugs and/or broken, loose or missing bulbs. Connecting the plugs or replace the bad bulbs promptly in order to maintain the performance and life expectancy of your pre-lit tree.
7. This is a Simple Shape™ tree. Just slightly upsweep all branch tips for a uniform look. Shift branches to fill any gaps. Your Christmas tree is now complete and ready to be decorated.

STORAGE INSTRUCTIONS

1. Unplug adaptor from the wall outlet first and then remove all ornaments and decorations.
2. Disassemble the tree from the top to the bottom. Start with the tree top and gently lift straight up to remove from section below and fold all branches toward the pole.
3. Continue by gently lifting straight up each section(s) from the section below and fold all branches toward the pole until the bottom section is removed from the tree stand. Cover the protective cap on the poles to avoid damaging the internal parts. **(See Fig. C)**
4. Carefully place all tree sections into shipping box and tape it shut.
5. When not in use, please store your tree in a cool, dry place away from sunlight. Exposing your tree to excessive heat or humidity may damage your tree.

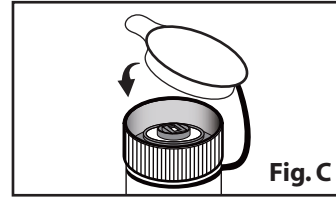


Fig. C

TROUBLE SHOOTING TIPS

For Pre-lit Trees, If The Tree Does Not Illuminate

1. Please check to make sure that all plugs are properly connected and adaptor is plugged into the wall outlet. (If the tree comes with a foot pedal, try stepping on the on/off button).
2. Turning the poles gently to make sure pole to pole are connected into place.
3. Check for loose connection between light string plugs and extension cords.
4. Please check for loose, broken or missing light bulbs and replace as needed.

Loose Hinge Pin

1. Extra hinge pins are included for repairing the hinges. Place the branch into the slot of the bracket.
2. Insert a new hinge pin through the hole and secure using the retainer washer. **(See Fig. D)**

SPARE PARTS

Each tree includes hinge pins/washers, and for pre-lit trees spare bulbs are also included. If extra parts are needed, please contact our customer service center.

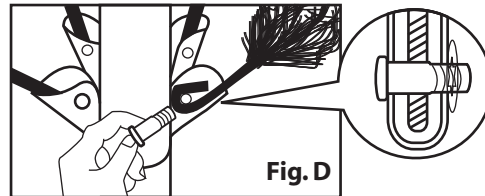


Fig. D

⚠ WARNING

The external flexible cable or cord of this luminaire cannot be replaced; If the cord is damaged, the luminaire shall be destroyed.

ARBOL NAVIDEÑO
 MARCA: MEMBER'S MARK
 MODELO: TG90P3914C02
 ESPECIFICACIONES ELÉCTRICAS
 120 V~ 60 Hz 576 W
 CONTENIDO 1 PZA
 HECHO EN CHINA

ANTES DE UTILIZAR EL PRODUCTO LEA EL INSTRUCTIVO
 CONSERVE EL INSTRUCTIVO PARA FUTURAS REFERENCIAS
 NO CONECTAR MAS DE TRES SERIES EN SERIE

EN CASO DE QUE SU CORDÓN DE ALIMENTACIÓN LLEGASE A SUFRIR UN DAÑO TOTAL O PARCIAL NO TRATE DE REPARARLO ACUDA AL CENTRO DE SERVICIO MARCADO EN SU GARANTÍA O BIEN CON UN TÉCNICO ESPECIALISTA

ESTE APARATO NO ESTA DESTINADO PARA SER UTILIZADO POR PERSONAS (INCLUYE MENORES DE EDAD) CUYAS CAPACIDADES FÍSICAS, SENSORIALES O MENTALES SEAN DIFERENTES O ESTÉN REDUCIDAS, O CAREZCAN DE EXPERIENCIA O CONOCIMIENTO, A MENOS QUE DICHAS PERSONAS RECIBAN UNA SUPERVISIÓN O CAPACITACIÓN PARA EL FUNCIONAMIENTO DEL APARATO, POR UNA PERSONA RESPONSABLE DE SU SEGURIDAD

LOS MENORES DE EDAD DEBEN SER SUPERVISADOS POR UN ADULTO PARA ASEGURAR QUE ELLOS NO EMPLEEN ESTE PRODUCTO COMO UN JUGUETE.

IMPORTADOR: COMERCIALIZADORA MÉXICO AMERICANA S. DE R.L. DE C.V.

DIRECCIÓN: AV. NEXTENGO No. 78 COL. SANTA CRUZ ACAYUCAN DELEGACIÓN AZCAPOTZALCO, MÉXICO D.F.
 C.P. 02770

R.F.C. CMA 9109119L0
 TEL. IMPORTADOR: 58-99-12-00 EXT:31616

